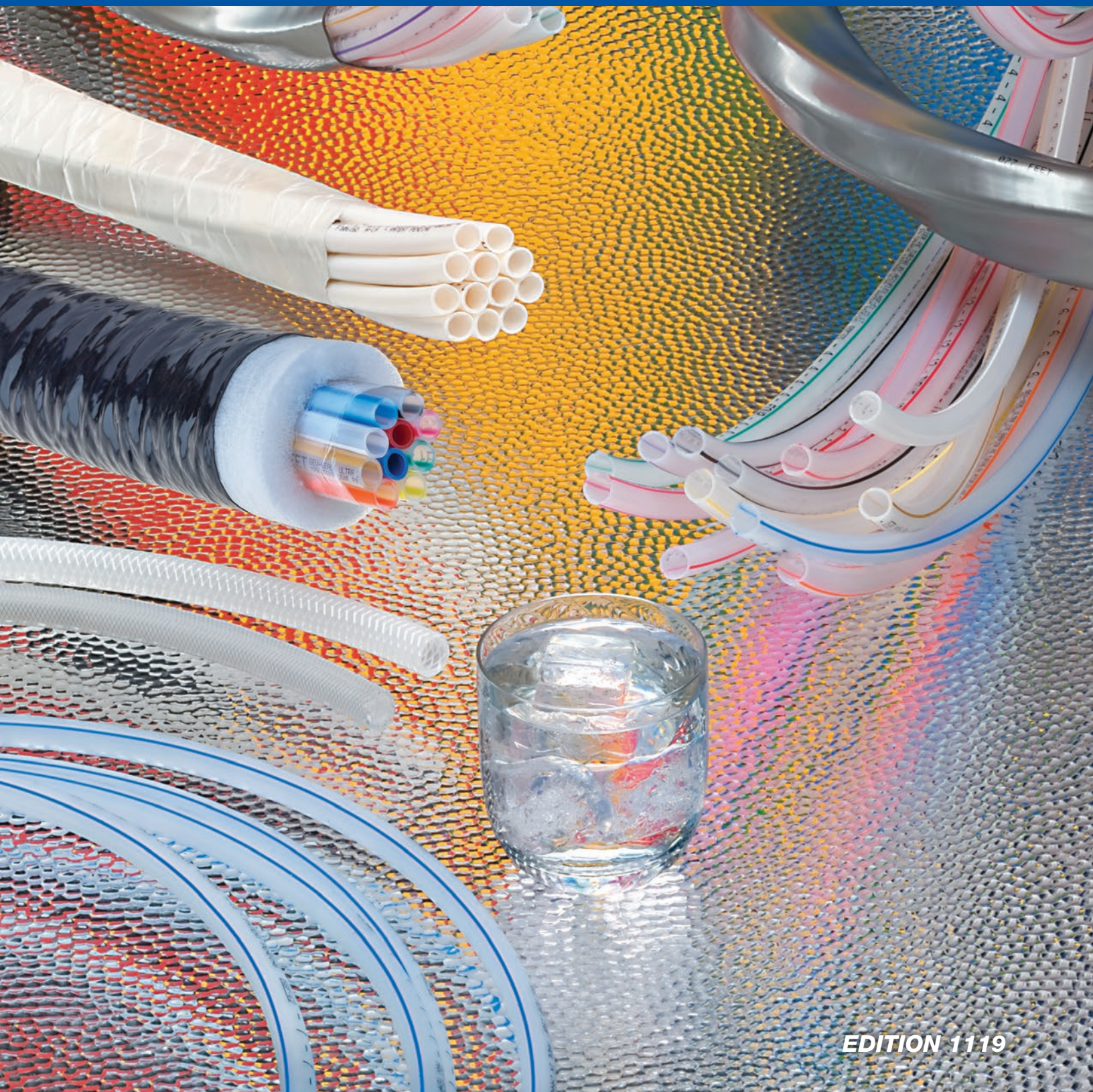




*The Leader in Flavor Protection*

# Beverage Transfer Products



EDITION 1119



# Accuflex Beverage Transfer Products

## Accuflex — The Recognized Leader in Beverage Transfer Products

**GOOD**

● **Bevlex®**  
Your *Value* Choice

**BETTER**

● **Bev-Seal®**  
Your *Barrier* Choice

**BEST**

● **Bev-Seal Ultra®**  
Your *Flushable Barrier* Choice



Accuflex NSF-listed hose, tubing and cabled bundle products for beverage dispensing are the most trusted names in the industry because they provide consistent, dependable, economical performance. They help maintain the highest drink quality, while reducing costly service calls. They are very easy to install, reliable and provide great customer satisfaction with fewer call-backs. Small wonder these fine products have set the standard for the industry and have become the most-specified beverage dispensing products by quality-conscious customers.

## Index

### Additional Information & Accessories

|  |            |
|--|------------|
| Accu-Cutter Tubing, Hose and Bundle Cutters .....      | 19         |
| Best Practices — Installation of Bev-Seal Ultra® ..... |            |
| Lined hose, tubing & bundles .....                     | 20         |
| Frequently Used Terms .....                            | 21         |
| Frequently Asked Questions .....                       | 21 & 22    |
| Care and Storage .....                                 | 23         |
| Cautionary Statement & Limited Warranty .....          | Back Cover |

### Bundles

|   |   |
|---|---|
| 973 Series Bev-Seal Ultra® Insulated Barrier Bundle .....           | 7 |
| 974H Series Bev-Seal Ultra® Cabled Barrier Tubing/Hose Bundle ..... | 5 |
| 974 Series Bev-Seal Ultra® Cabled Barrier Bundles .....             | 6 |
| 975FR Series Bev-Seal Ultra® Fire Resistant Cabled Bundle .....     | 8 |

### Drain Tubing & Hoses

|   |    |
|---|----|
| 218 Series Sani-Clean AM™ Drain Tubing .....                | 16 |
| 213 Series Black PVC Drain Tubing .....                     | 17 |
| 213G Series Green & 213B Series Blue PVC Drain Tubing ..... | 17 |
| 215 Series Gray PVC Drain Tubing .....                      | 17 |
| Drain Hoses — Insulated & Non-Insulated .....               |    |
| Flexible Insulated Drain Hoses .....                        | 18 |
| Flexible Non-Insulated Drain Hoses .....                    | 18 |

### Hoses

|   |   |
|---|---|
| 175 Series Bev-Seal Ultra® Barrier Hose ..... | 9 |
|---|---|

|   |    |
|---|----|
| 176 Series Bev-Seal® C02 Hose .....   | 9  |
| 180 Series Reinforced Bevlex® Plus 180 Hose .....                             | 10 |
| 172 Series Bev-Flex® Polyester-Reinforced<br>Polyethylene Beverage Hose ..... | 11 |
| 170 Series Bevlex® Polyester-Reinforced<br>Polyethylene Beverage Hose .....   | 11 |
| K3150 CLEARBRAID® Series<br>Reinforced PVC Beverage Hose .....                | 12 |
| K7160 POLYSPRING® Series<br>Reinforced PVC Vacuum & Transfer Hose .....       | 12 |

### Tubing

|   |    |
|---|----|
| 235 Series Bev-Seal Ultra® Tubing .....   | 13 |
| 222/224 Series Bevlex® — Linear low density non-barrier<br>polyethylene tubing .....                        | 14 |
| K010 Series Klearon™ Clear Food-Grade PVC Tubing .....  | 14 |
| 200 Series Bevlex® Clear PVC tubing for bag-in-box<br>soft drink applications and draft beer transfer ..... | 15 |
| 203 Series Bevlex® BLACK PVC BEER TUBING<br>for carbon dioxide supply lines .....                           | 15 |
| 204 Series Bevlex® RED PVC BEER TUBING<br>for air supply lines .....  | 15 |
| 209B Series Blue PVC Beer Tubing for Air Supply Lines .....   | 15 |
| 209D Series Bevlex® Blue PVC Beer Tubing for air<br>supply lines .....                                      | 15 |
| 209R Series Bevlex® Red PVC Beer Tubing for air<br>supply lines .....                                       | 15 |

Because we continually examine ways to improve our products, we reserve the right to alter specifications without notice.

# Accuflex Beverage Transfer Products

## **Bev-Seal Ultra®** hose and tubing

This unique multi-layer design combines the flushability and taste-free characteristics of the **Glas-Flex™** liner with the overall permeation-resistance of the original **Bev-Seal®** product line. Whenever flushability, taste-free performance, or protection against taste-transfer or flavor contamination is a concern, choose **Bev-Seal Ultra®** products.

## **Bev-Seal Ultra®** cabled beverage bundles

The exclusive **Bev-Seal Ultra®** cabled bundle construction provides the first truly installer-friendly barrier tubing bundle. Compact, light weight and incredibly flexible, it bends and stays in place, and rolls out straight while eliminating loops and twists for the ultimate ease of installation and labor savings. The multi-layer construction provides layer-upon-layer of protection, from the inside out and from the outside in.

## **BEVLEX®** Non-Barrier hose, tubing and bundles

Economical polyethylene-based products incorporating a special linear low density polyethylene tube material that offers the best combination of low taste and odor, along with resistance to stress-cracking. These reliable products continue to satisfy the basic needs of the beverage industry.

## **Bev-Seal®** 176 Series— Barrier Protected - UV Resistant CO2 Supply Hoses

Bev-Seal® CO2 Barrier Protected – UV Resistant CO2 Supply Hose is ideal for pressure regulated CO2 Supply Lines up to 300 PSI WP @ RT. It is recommended for supplying regulated CO2 Gas to Carbonators for Carbonated Beverage and Beer dispensing. This quality hose provides excellent Barrier Protection from environmental contamination, thus assuring the quality of the CO2 gas being delivered and therefore ensuring a quality tasting final beverage. In addition to the exclusive custom formulated outer jacket compounds, the cover jacket is co-extruded with a unique Duo-Ex WHITE over BLACK combination, that provides the optimum in UV and weather resistance, resulting in superior outdoor service life.

## **BEV-FLEX®** 172 Series— the flexible beverage hose

This revolutionary product adds the flexibility that you need to the protection provided by the same liner used in all our quality **Bevlex®** beverage products. **Bev-Flex®** hose is extremely flexible, kink-resistant, and allows a very tight bend radius for those “hard to install” locations.

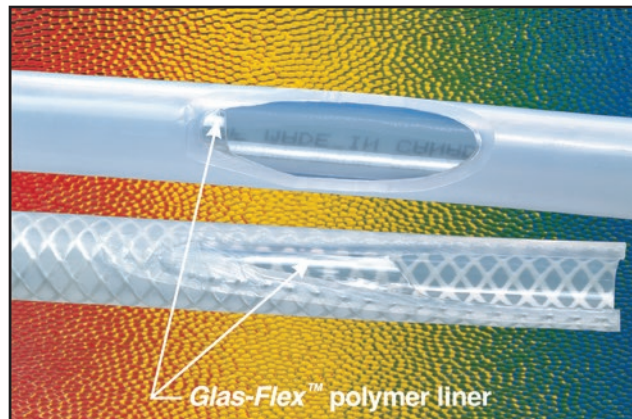
Because we continually examine ways to improve our products, we reserve the right to alter specifications without notice.



# Accuflex Beverage Transfer Products

## The Flavor Delivery Choice!

The **Bev-Seal Ultra**® flushable Dual-Barrier system, exclusive to Accuflex, combines two barrier layers to protect your beverages from cross-tastes and other off-tastes. The Dual-Barrier system, with an ultra smooth inner surface, provides permeation resistance far superior to products with single barrier liners. This system gives you a flushable flavor control package that not only allows the true flavor of your beverages to be enjoyed, but also allows for flavor changes when needed. Patent applications are pending in the USA and in the UK on the use of the Glas-Flex™ liner and the Dual-Barrier construction.



## **Bev-Seal Ultra**® with Glas-Flex™ Inner Liner — The Flushable Dual-Barrier System!

**Bev-Seal Ultra**® beverage hose, tubing and bundles feature our exclusive **Glas-Flex**™ inner layer, creating a truly flushable Dual-Barrier product that allows quick flavor changes, including pungent flavors.

Our **Glas-Flex**™ inner liner is:

- Non-porous
- Non-absorbent
- Flushable
- Taste-Free
- FDA-Sanctioned
- NSF-51/NSF-61 Accepted

The **Glas-Flex**™ polymer liner offers permeation resistance to flavors and gases, **Bev-Seal Ultra**® products still utilize our proprietary barrier layer in the wall of the tube to give optimum permeation resistance for organic flavors and gases such as oxygen and carbon dioxide. This dual-barrier construction makes **Bev-Seal Ultra**® products ideal for conveying and dispensing soft drinks for which flavor cross-over protection for pungent flavors is needed, and for juices and beer for which oxygen protection is critical.



Extensive laboratory testing, using both analytical and sensory techniques, has demonstrated that **Bev-Seal Ultra**® products are the best in the industry to assure that the great original flavor of beverages is not altered or compromised by the hose or tubing, even over extended lengths. **Bev-Seal Ultra**® can transport and hold both alcoholic and non-alcoholic beverages, while retaining their properties for hours, days, and even weeks.

As part of our comprehensive field testing program in actual commercial installations, we confirmed that a highly flavored cranberry concentrate and a colorless carbonated beverage could be exchanged in the **Bev-Seal Ultra**® lines through a normal sanitizing protocol without evidence of any residual flavor left in the lines. Now, even pungent flavors can be switched without the need to remove and replace the tubing lines.

Because we continually examine ways to improve our products, we reserve the right to alter specifications without notice.





# Accuflex Beverage Transfer Products



*Syrup tubes, water hoses and gas hoses all in one convenient cabled bundle!*

## **Bev-Seal Ultra® 974H Series Cabled Barrier Tubing/Hose Bundle**

**Construction:** Flushable **Bev-Seal Ultra®** 235 Series syrup tubes, each color coded, individually numbered and branded with date codes for traceability. In each configuration, there are two 3/8" ID PET-lined **Bevlex® Plus** 180 Series hoses specifically included to carry water at pressures up to 300 psig at 70°F. In addition one 1/4" ID polyethylene **Bev-Seal®** 176 Series hose has been included to carry carbon dioxide gas at pressures up to 250 psig at 70°F. The cable construction and silver-gray “low-friction” extruded jacket allows for convenient one-step installation. All component lines are NSF-51 and NSF-61 certified and are branded accordingly. Sequential footage marks on the bundle jacket add to the ease of installation.

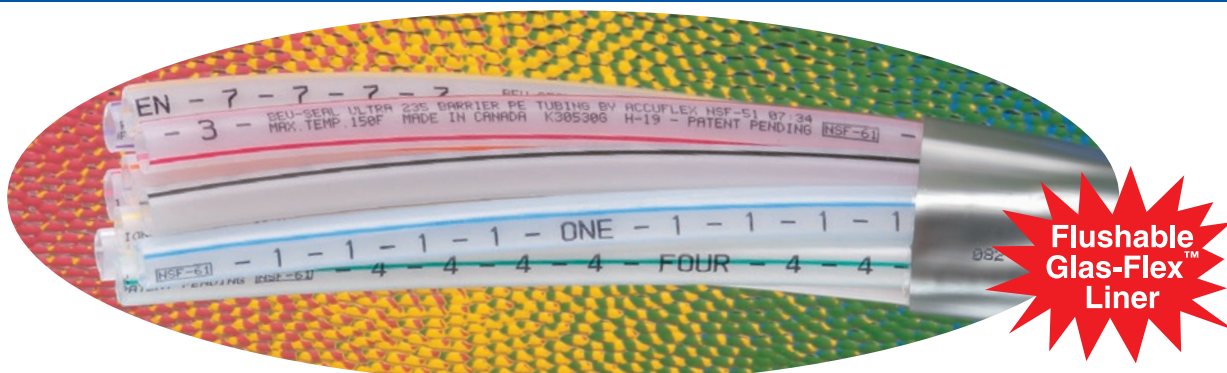
### **Nominal Specifications**

| Part Number      | Standard Package | Description & Configuration for Each Bundle<br>Film Wrapped —<br>Silver-Gray Extruded Jacket | Max.<br>Bundle<br>OD (in) | Weight<br>per Pkg. |       | Min. Bend<br>Radius<br>(in) | Clamp<br>Size<br>(mm) |
|------------------|------------------|--|---------------------------|--------------------|-------|-----------------------------|-----------------------|
|                  |                  |  |                           | (lbs)              | (kgs) |                             |                       |
| 974H-00080012-01 | 100' Coil        | 8 – .380 x .500 <b>Bev-Seal Ultra®</b> 235 Syrup Tubes                                       | 2.3                       | 75                 | 34    | 10                          | 14.0                  |
| 974H-00080012-02 | 200' Reel        | 2 – .375 x .593 <b>Bevlex® Plus</b> 180 Water Hoses  | 2.3                       | 160                | 73    | 10                          | 15.7                  |
| 974H-00080012-05 | 500' Reel        | 1 – .265 x .457 <b>Bev-Seal®</b> 176 Gas Hose  | 2.3                       | 450                | 204   | 10                          | 13.3                  |
| 974H-00100012-01 | 100' Coil        | 10 – .380 x .500 <b>Bev-Seal Ultra®</b> 235 Syrup Tubes                                      | 2.3                       | 83                 | 38    | 10                          | 14.0                  |
| 974H-00100012-02 | 200' Reel        | 2 – .375 x .593 <b>Bevlex® Plus</b> 180 Water Hoses  | 2.3                       | 189                | 86    | 10                          | 15.7                  |
| 974H-00100012-05 | 500' Reel        | 1 – .265 x .457 <b>Bev-Seal®</b> 176 Gas Hose  | 2.3                       | 466                | 212   | 10                          | 13.3                  |
| 974H-00120012-01 | 100' Coil        | 12 – .380 x .500 <b>Bev-Seal Ultra®</b> 235 Syrup Tubes                                      | 2.5                       | 92                 | 42    | 12                          | 14.0                  |
| 974H-00120012-02 | 200' Reel        | 2 – .375 x .593 <b>Bevlex® Plus</b> 180 Water Hoses  | 2.5                       | 197                | 90    | 12                          | 15.7                  |
| 974H-00120012-05 | 500' Reel        | 1 – .265 x .457 <b>Bev-Seal®</b> 176 Gas Hose  | 2.5                       | 510                | 231   | 12                          | 13.3                  |
| 974H-00140012-01 | 100' Coil        | 14 – .380 x .500 <b>Bev-Seal Ultra®</b> 235 Syrup Tubes                                      | 2.6                       | 100                | 45    | 13                          | 14.0                  |
| 974H-00140012-02 | 200' Reel        | 2 – .375 x .593 <b>Bevlex® Plus</b> 180 Water Hoses  | 2.6                       | 226                | 103   | 13                          | 15.7                  |
| 974H-00140012-05 | 500' Reel        | 1 – .265 x .457 <b>Bev-Seal®</b> 176 Gas Hose  | 2.6                       | 554                | 252   | 13                          | 13.3                  |
| 974H-00160012-01 | 100' Coil        | 16 – .380 x .500 <b>Bev-Seal Ultra®</b> 235 Syrup Tubes                                      | 2.8                       | 108                | 49    | 14                          | 14.0                  |
| 974H-00160012-02 | 200' Reel        | 2 – .375 x .593 <b>Bevlex® Plus</b> 180 Water Hoses  | 2.8                       | 248                | 113   | 14                          | 15.7                  |
| 974H-00160012-05 | 500' Reel        | 1 – .265 x .457 <b>Bev-Seal®</b> 176 Gas Hose  | 2.8                       | 598                | 272   | 14                          | 13.3                  |

**Bevlex®** and **Bev-Seal Ultra®** are registered trademarks of Kuriyama of America, Inc., Schaumburg, IL, USA

Because we continually examine ways to improve our products, we reserve the right to alter specifications without notice.

# Accuflex Beverage Transfer Products



## Bev-Seal Ultra® 974 Series Cabled Barrier Tubing Bundle

**Construction:** Flushable **Bev-Seal Ultra®** 235 Series tubes (see page 13), each color coded, individually numbered and branded with NSF-51 and NSF-61 listings and date codes for traceability. Special film wrap over cabled tubes offers excellent flexibility and tight bend capabilities. Silver-gray extruded jacket, with slip agent to minimize friction, is branded with product identification, NSF listing marks, and sequential footage markings for ease of measurement. Other jacket colors available (some limitations may apply).

### Nominal Specifications

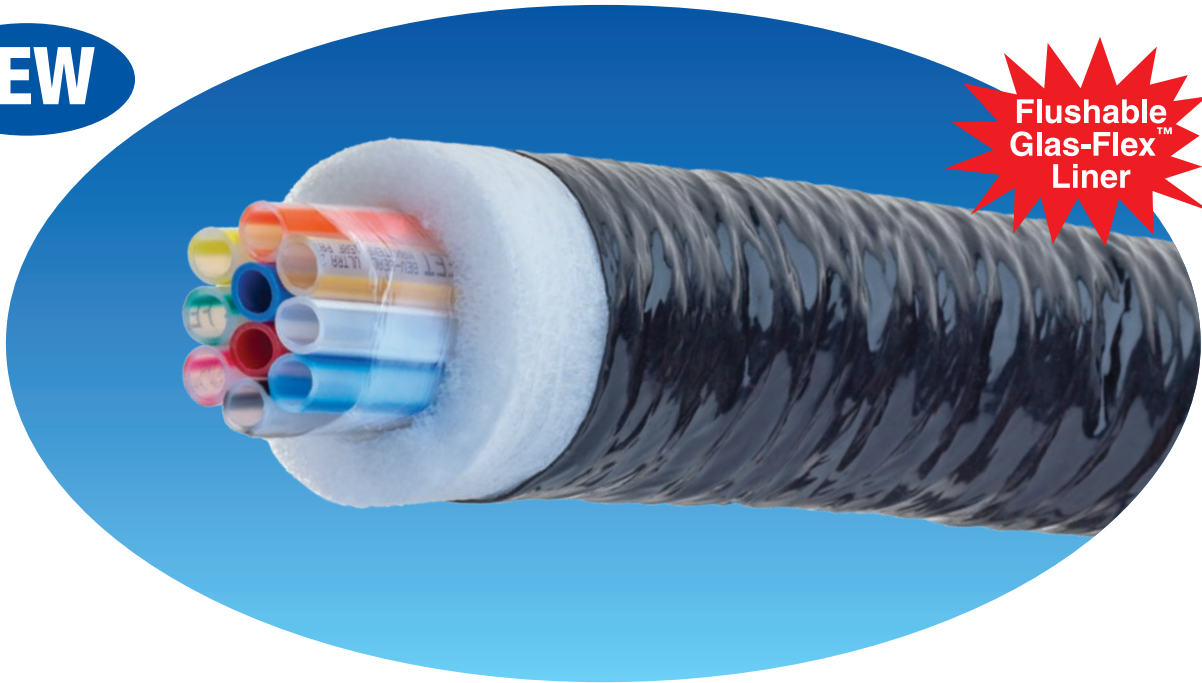
| Part Number  | Standard Package | Description & Configuration<br>Film Wrapped —<br>Silver-Gray Extruded Jacket | Max.<br>Bundle<br>OD (in) | Weight<br>per Pkg |       | Min. Bend<br>Radius<br>(in) | Clamp<br>Size<br>(mm) |
|--------------|------------------|--|---------------------------|-------------------|-------|-----------------------------|-----------------------|
|              |                  |  |                           | (lbs)             | (kgs) |                             |                       |
| 974-07010-01 | 100' Coil        | 7 – .265 x .375 <b>Bev-Seal Ultra®</b> Tubes                                 | 1.5                       | 39                | 18    | 5                           | 10.0                  |
| 974-07010-02 | 200' Reel        | 1 – .380 x .500 <b>Bev-Seal Ultra®</b> Tube                                  |                           | 87                | 35    |                             | 14.0                  |
| 974-07010-05 | 500' Reel        |  |                           | 207               | 94    |                             |                       |
| 974-08020-01 | 100' Coil        | 8 – .265 x .375 <b>Bev-Seal Ultra®</b> Tubes                                 | 1.7                       | 48                | 22    | 6                           | 10.0                  |
| 974-08020-02 | 200' Reel        | 2 – .380 x .500 <b>Bev-Seal Ultra®</b> Tubes                                 |                           | 105               | 48    |                             | 14.0                  |
| 974-08020-05 | 500' Reel        |  |                           | 240               | 109   |                             |                       |
| 974-08040-01 | 100' Coil        | 8 – .265 x .375 <b>Bev-Seal Ultra®</b> Tubes                                 | 2.0                       | 51                | 23    | 7                           | 10.0                  |
| 974-08040-02 | 200' Reel        | 4 – .380 x .500 <b>Bev-Seal Ultra®</b> Tubes                                 |                           | 116               | 53    |                             | 14.0                  |
| 974-08040-05 | 500' Reel        |  |                           | 268               | 122   |                             |                       |
| 974-10020-01 | 100' Coil        | 10 – .265 x .375 <b>Bev-Seal Ultra®</b> Tubes                                | 2.0                       | 51                | 23    | 7                           | 10.0                  |
| 974-10020-02 | 200' Reel        | 2 – .380 x .500 <b>Bev-Seal Ultra®</b> Tubes                                 |                           | 116               | 53    |                             | 14.0                  |
| 974-10020-05 | 500' Reel        |  |                           | 268               | 122   |                             |                       |
| 974-10040-01 | 100' Coil        | 10 – .265 x .375 <b>Bev-Seal Ultra®</b> Tubes                                | 2.2                       | 62                | 28    | 8                           | 10.0                  |
| 974-10040-02 | 200' Reel        | 4 – .380 x .500 <b>Bev-Seal Ultra®</b> Tubes                                 |                           | 139               | 63    |                             | 14.0                  |
| 974-10040-05 | 500' Reel        |  |                           | 323               | 147   |                             |                       |
| 974-00080-01 | 100' Coil        |  | 2.0                       | 53                | 24    | 8                           | 14.0                  |
| 974-00080-02 | 200' Reel        | 8 – .380 x .500 <b>Bev-Seal Ultra®</b> Tubes                                 |                           | 121               | 55    |                             |                       |
| 974-00080-05 | 500' Reel        |  |                           | 273               | 129   |                             |                       |
| 974-00100-01 | 100' Coil        |  | 2.2                       | 58                | 26    | 9                           | 14.0                  |
| 974-00100-02 | 200' Reel        | 10 – .380 x .500 <b>Bev-Seal Ultra®</b> Tubes                                |                           | 139               | 63    |                             |                       |
| 974-00100-05 | 500' Reel        |  |                           | 341               | 155   |                             |                       |
| 974-00120-01 | 100' Coil        |  | 2.2                       | 67                | 30    | 10                          | 14.0                  |
| 974-00120-02 | 200' Reel        | 12 – .380 x .500 <b>Bev-Seal Ultra®</b> Tubes                                |                           | 147               | 67    |                             |                       |
| 974-00120-05 | 500' Reel        |  |                           | 385               | 175   |                             |                       |
| 974-00140-01 | 100' Coil        |  | 2.6                       | 75                | 34    | 10                          | 14.0                  |
| 974-00140-02 | 200' Reel        | 14 – .380 x .500 <b>Bev-Seal Ultra®</b> Tubes                                |                           | 176               | 80    |                             |                       |
| 974-00140-05 | 500' Reel        |  |                           | 429               | 195   |                             |                       |
| 974-00160-01 | 100' Coil        |  | 3.0                       | 83                | 38    | 12                          | 14.0                  |
| 974-00160-02 | 200' Reel        | 16 – .380 x .500 <b>Bev-Seal Ultra®</b> Tubes                                |                           | 198               | 90    |                             |                       |
| 974-00160-05 | 500' Reel        |  |                           | 473               | 215   |                             |                       |

Because we continually examine ways to improve our products, we reserve the right to alter specifications without notice.

# Accuflex Beverage Transfer Products

**NEW**

**Flushable  
Glas-Flex™  
Liner**



## **Bev-Seal Ultra® 973 Series Insulated Barrier Tubing Bundles**

**Construction:** *Bev-Seal Ultra®* 973 Series cabled insulated bundles are comprised of flushable *Bev-Seal Ultra®* 235 Series tubes which are NSF-51 and NSF-61 certified (see page 13), each color coded and individually numbered, and red/blue-colored *Bev-Seal Ultra®* Series coolant tubes strategically placed and designed to provide optimum cooling. A tear-resistant aluminized film wrap over the

group of tubes further enhances the insulating properties of the 3/4" thick tubular foam sleeve. A black extruded jacket with slip agent to minimize friction is branded with product identification, NSF listing marks, and footage counter marks.

### **Nominal Specifications**

| Part Number     | Standard Package | Description & Configuration<br>Foam Insulation • Film Wrapped<br>Black Extruded Jacket | Max.<br>Bundle<br>OD (in) | Weight per<br>Pkg. |       | Min. Bend<br>Radius<br>(in) | Clamp<br>Size<br>(mm) |
|-----------------|------------------|--|---------------------------|--------------------|-------|-----------------------------|-----------------------|
|                 |                  |  |                           | (lbs)              | (kgs) |                             |                       |
| 973-0004002X250 | 250' Reel        | 4 – .380 x .500 <i>Bev-Seal Ultra®</i> Tubes<br>2 – .380 x .500 Red/Blue Tubes         | 3.0                       | 176                | 80    | 12                          | 14.0                  |
| 973-0006002X250 | 250' Reel        | 6 – .380 x .500 <i>Bev-Seal Ultra®</i> Tubes<br>2 – .380 x .500 Red/Blue Tubes         | 3.4                       | 231                | 105   | 14                          | 14.0                  |
| 973-0008002X250 | 250' Reel        | 8 – .380 x .500 <i>Bev-Seal Ultra®</i> Tubes<br>2 – .380 x .500 Red/Blue Tubes         | 3.5                       | 250                | 114   | 8                           | 14.0                  |
| 973-0010004X250 | 250' Reel        | 10 – .380 x .500 <i>Bev-Seal Ultra®</i> Tubes<br>4 – .380 x .500 Red/Blue Tubes        | 3.8                       | 275                | 125   | 12                          | 14.0                  |
| 973-0012004X250 | 250' Reel        | 12 – .380 x .500 <i>Bev-Seal Ultra®</i> Tubes<br>4 – .380 x .500 Red/Blue Tubes        | 4.0                       | 297                | 135   | 12                          | 14.0                  |

**Note:** Call for quotation for non-standard configurations and/or lengths. . . minimums will apply.

\* Bundles containing 5/16" product tubes are available as 973S Series.

Because we continually examine ways to improve our products, we reserve the right to alter specifications without notice.



# Accuflex Beverage Transfer Products



**Flushable  
Glas-Flex™  
Liner**



## Bev-Seal Ultra® 975FR Series Fire Resistant Cabled Bundle

**Construction:** Flushable **Bev-Seal Ultra® 175FR Series** fire resistant hoses, individually branded with NSF-51 and NSF-61 listings, and date codes for traceability.

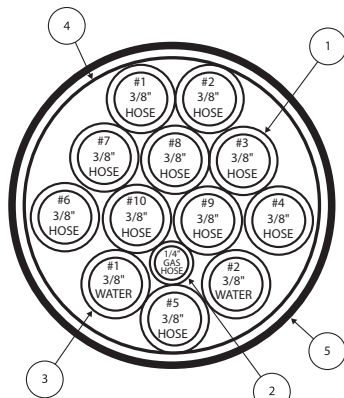
Each hose incorporates extruded layers of fire resistant non-halogen polyolefin compound. Special metallized film wrap over the hoses, plus an outer wrap of white fiberglass tape secure the

hoses and provide additional Fire Resistance.

When a simulated model bundle is tested in accordance with ASTM E84/UL 723 Test for Surface Burning Characteristics of Building Materials, the Flame Spread Index (FSI) and Smoke Developed Index (SDI) are less than 25 and 75 respectively, in compliance with Class 1 or "A" requirements.

### Nominal Specifications

| Part Number       | Standard Package | Configuration | Max. Bundle OD (in) | Weight per Pkg. |       | Min. Bend Radius (in) | Clamp Size (mm) |
|-------------------|------------------|---------------|---------------------|-----------------|-------|-----------------------|-----------------|
|                   |                  |               |                     | (lbs)           | (kgs) |                       |                 |
| 975FR-00100012-01 | 100' Coil        | See Below     | 2.1                 | 79              | 36    | 14                    | See Below       |
| 975FR-00100012-02 | 200' Reel        | See Below     | 2.1                 | 174             | 79    | 14                    | See Below       |
| 975FR-00100012-05 | 500' Reel        | See Below     | 2.1                 | 411             | 187   | 14                    | See Below       |



#### 975FR-00100012-01/-02/-05

- 1 10 x 3/8" I.D. x .535" O.D. F/R BARRIER HOSES (#1 - #10) FOR SODA OR PUNGENT FLAVOR SYRUP (e.g. ROOT BEER) (14.5 Clamp Size)
- 2 1 x 1/4" I.D. x .457" O.D. F/R GAS HOSE (13.3 Clamp Size)
- 3 2 x 3/8" I.D. x .593" O.D. F/R BARRIER "WATER" HOSES (15.7 Clamp Size)
- 4 ALUMINUM WRAP
- 5 FIBERGLASS WRAP

### Notes:

- 1) 975FR Series beverage bundles are available on special order. The configuration shown above is for illustrative purposes.
- 2) All testing was carried out on finished products rather than material components only. A test report confirming fire and smoke indexes is available.

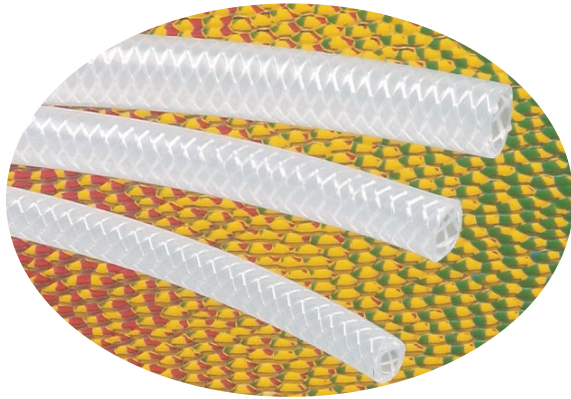
Because we continually examine ways to improve our products, we reserve the right to alter specifications without notice.



# Accuflex Beverage Transfer Products

## Bev-Seal® Ultra® 175 Series Barrier Hose

Oxygen and flavor barrier properties combined with flushability in a yarn-reinforced hose.



- **Flushable Glas-Flex™ Liner** — Allows changeovers from even the most pungent flavors with simple flushing procedures.
- **NSF-Certified Products** — Certified to standard NSF-51 for food equipment and NSF-61 for drinking water systems.
- **Dual-Barrier Construction** — Flushable **Glas-Flex™** inner liner surrounded by a seamless extruded barrier layer in a polyolefin core tube, reinforced with polyester yarn and protected by a smooth EVA cover.
- **Phthalate Free**



### Nominal Specifications

| Part Number  | Standard Package  | Nominal |         | Working Pressure (psi) |       | Weight per Pkg. |       | Min. Bend Radius (in) | Clamp Size (mm) |
|--------------|-------------------|---------|---------|------------------------|-------|-----------------|-------|-----------------------|-----------------|
|              |                   | ID (in) | OD (in) | 70°F                   | 122°F | (lbs)           | (kgs) |                       |                 |
| 175-04500-XX | 500' Boxed Spool  | .265    | .420    | 300                    | 150   | 9.1             | 4.1   | 1.75                  | 11.3            |
| 175-06300-XX | 300' Boxed Spool  | .375    | .535    | 300                    | 150   | 7.8             | 3.5   | 3.00                  | 14.5            |
| 175-08300-XX | 300' Wrapped Coil | .510    | .675    | 250                    | 125   | 8.5             | 3.9   | 4.50                  | 18.5            |

Individually numbered hoses are available for easy identification of multiple lines on special order. A typical Part Number is 175-04500-XX for a 500 ft. spool of 1/4" size hose, where "XX" indicates the number to be imprinted (use "00" for unnumbered hose).

## Bev-Seal® 176 Series Barrier Protected - UV Resistant CO2 Supply Hoses



- **Hose Suitable For The Transfer Of Pressure Regulated CO2 Gas** - Working pressures up to a maximum of 300 psi @ RT based on minimum burst of 1200 PSI.
- Inner contact material is inert Polyethylene which complies with FDA CFR 177.1520 c 3.2a.
- **Proprietary Barrier Protected Core Tube Design** - Resists permeation of the CO2 gas, while at the same time protecting the gas from ingress of external contaminants.
- **Unique Duo-Ex WHITE Over BLACK Outer Jacket** - Provides superior UV resistance and outdoor service life.
- **Thicker Wall Construction** - Provides superior bend radius and kink resistance.
- **Exceptional Low Temperature Operating Properties** - Will bend without cracking at -109°F (-78°C)
- **Phthalate Free**

**Service Temperature Range:** -109°F (-78°C) to + 140°F (+60°C)

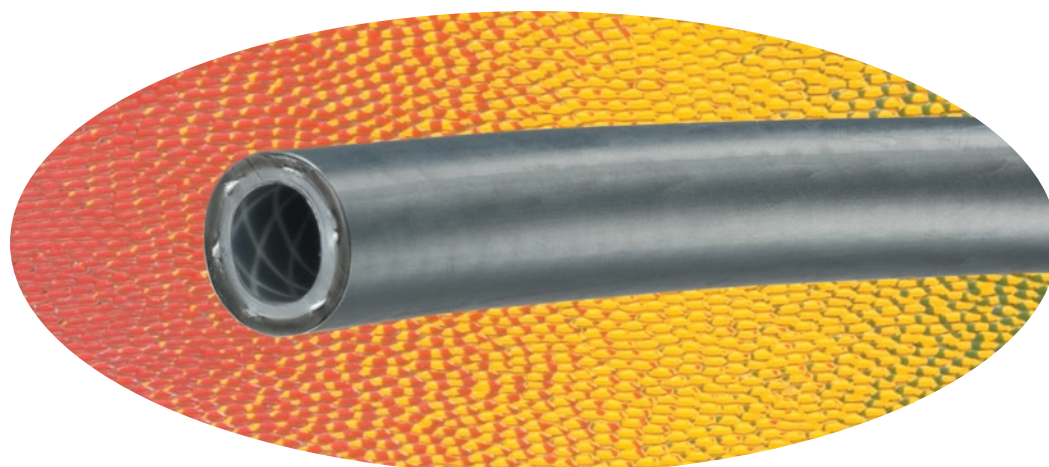
### Nominal Specifications

| Part Number  | Standard Package | ID (in) | OD (in) | Max. Working Pressure (psi) at 70°F | Weight (lbs) | Weight (kgs) | Min. Bending Radius (in) | Clamp Size (mm) |
|--------------|------------------|---------|---------|-------------------------------------|--------------|--------------|--------------------------|-----------------|
| 176-04502-00 | 500' Boxed Spool | .265    | .457    | 300                                 | 25.1         | 11.4         | 1.25                     | 13.3            |
| 176-06302-00 | 300' Boxed Spool | .380    | .593    | 300                                 | 22.9         | 10.4         | 2.00                     | 15.7            |

† Note: Working Pressure decreases as temperature increases. Pressure ratings can only be obtained with proper coupling procedures.

Because we continually examine ways to improve our products, we reserve the right to alter specifications without notice.

# Accuflex Beverage Transfer Products



**Phthalate  
FREE**



## Reinforced Bevlex® Plus 180 Series Hose

Reinforced Bevlex® Plus 180 hoses are ideal for pressure lines, while providing good kink resistance. They are recommended for use on filtered water and carbonated water lines where algae growth can be a concern, thus assuring good taste protection properties and pressure performance.

**Construction:** Glas-Flex™ (PET) liner / Polyester yarn reinforcement / Opaque EVA Silver on Black jacket.

**Service Temperature:** -40°F (-40°C) to 150°F (65.5°C)\*

### Features and Benefits:

- **The Glas-Flex™ Liner (PET)** – Is a hard smooth contact surface that is non-porous, non-reactive, odorless, tasteless and provides superior barrier, cleanability and flushability. It offers optimum taste properties with no extraction that could impart taste into the water.
- **The Glass-Like Smooth Contact Surface** – Will not trap water-borne contaminants or provide sites for algae growth.
- **Heavy Walled Construction** – To resist crushing and kinking, and provide ease of handling during installation.
- **Bevlex® Plus 180 Hose** – Offers the purity of the Bev-Seal Ultra® 175 hose with the handling ease of the Bevlex® 170 hose.
- **Dual-Walled Silver/Black Layered Opaque Jacket** – Prevents transmission of light including UV radiation through the hose wall, thus reducing the risk of algae growth in filtered water.
- **Phthalate Free**

## Nominal Specifications

| Part Number   | Standard Package | Nominal |         | Max. Working Pressure (psi) at 70°F | Weight |       | Min. Bend Radius (in) | Clamp Size (mm) |
|---------------|------------------|---------|---------|-------------------------------------|--------|-------|-----------------------|-----------------|
|               |                  | ID (in) | OD (in) |                                     | (lbs)  | (kgs) |                       |                 |
| 180-04100-SIL | 100' Boxed Spool | .265    | .457    | 300                                 | 5.0    | 2.3   | 1.25                  | 13.3            |
| 180-04500-SIL | 500' Boxed Spool | .265    | .457    | 300                                 | 25.1   | 11.4  | 1.25                  | 13.3            |
| 180-06100-SIL | 100' Boxed Spool | .375    | .593    | 300                                 | 7.6    | 3.5   | 2.00                  | 15.7            |
| 180-06300-SIL | 300' Boxed Spool | .375    | .593    | 300                                 | 22.9   | 10.4  | 2.00                  | 15.7            |
| 180-08100-SIL | 100' Boxed Spool | .510    | .740    | 250                                 | 9.0    | 4.1   | 3.50                  | 19.8            |
| 180-08300-SIL | 300' Boxed Spool | .510    | .740    | 250                                 | 26.9   | 12.2  | 3.50                  | 19.8            |

### Certifications:

FDA Food Contact Compliance CFR (21 CFR 177.1630)

NSF-51 Food Equipment

NSF-61 Drinking Water Components

Because we continually examine ways to improve our products, we reserve the right to alter specifications without notice.



# Accuflex Beverage Transfer Products

## Bev-Flex® 172 Series Polyester-Reinforced Polyethylene Beverage Hose



- **Proprietary Core Tube Construction** – Provides low odor and taste, excellent stress crack resistance and exceptional flexibility . . . makes fitting installation easier.
- **Food-Grade Materials** – Bev-Flex® 172 Series beverage hose is NSF-51/61 certified. Polyethylene material complies with FDA Regulation 21 CFR 177.1520 (c) 3.1 b for food contact under conditions of use D through H in Table 2 of 21 CFR 176.170 (c).
- **Polyester Reinforcement** – Provides pressure performance and kink-resistance exceeding that of simple tubing.
- **Smooth EVA (Ethylene Vinyl Acetate) Cover** – Provides increased flexibility.
- **Phthalate Free**

### Nominal Specifications

| Part <sup>†</sup><br>Number | Standard<br>Package | Nominal |         | Working Pressure (psi) |       | Weight |       | Min. Bend<br>Radius<br>(in) | Clamp<br>Size<br>(mm) |
|-----------------------------|---------------------|---------|---------|------------------------|-------|--------|-------|-----------------------------|-----------------------|
|                             |                     | ID (in) | OD (in) | 70°F                   | 122°F | (lbs)  | (kgs) |                             |                       |
| ▲ 172-041X4                 | 100' Boxed Coil     | .250    | .385    | 250                    | 125   | 3.0    | 1.4   | 1.25                        | 10.5                  |
| ▲ 172-048X4                 | 800' Boxed Spool    | .250    | .385    | 250                    | 125   | 26.0   | 11.8  | 1.25                        | 10.5                  |
| *172-041X3                  | 100' Boxed Coil     | .265    | .420    | 250                    | 125   | 5.2    | 2.3   | 1.25                        | 11.3                  |
| 172-045X3                   | 500' Boxed Spool    | .265    | .420    | 250                    | 125   | 21.0   | 9.5   | 1.25                        | 11.3                  |
| *172-041X2                  | 100' Boxed Coil     | .265    | .457    | 250                    | 125   | 6.2    | 2.8   | 1.10                        | 12.3                  |
| 172-045X2                   | 500' Boxed Spool    | .265    | .457    | 250                    | 125   | 25.1   | 11.4  | 1.10                        | 12.3                  |
| *172-061X3                  | 100' Boxed Coil     | .380    | .537    | 200                    | 100   | 6.2    | 2.8   | 2.00                        | 14.5                  |
| 172-063X3                   | 300' Boxed Spool    | .380    | .537    | 200                    | 100   | 17.0   | 7.7   | 2.00                        | 14.5                  |
| *172-061X0                  | 100' Boxed Coil     | .380    | .593    | 200                    | 100   | 8.2    | 3.7   | 1.75                        | 15.7                  |
| 172-063X0                   | 300' Boxed Spool    | .380    | .593    | 200                    | 100   | 22.9   | 10.4  | 1.75                        | 15.7                  |
| *172-081X0                  | 100' Boxed Coil     | .510    | .740    | 200                    | 100   | 10.2   | 4.8   | 3.00                        | 19.8                  |
| 172-083X0                   | 300' Wrapped Coil   | .510    | .740    | 200                    | 100   | 26.9   | 12.2  | 3.00                        | 19.8                  |

\* 100' one-piece coils may be available — ideal for kits and bag-in-box racks. † Tracer yarn color coding — substitute for "X": 0 – White; 1 – Red; 2 – Blue.  
▲ New lighter weight hose available on special production run only.

## Bevlex® 170 Series Polyester-Reinforced Polyethylene Beverage Hose



- **LLDPE Core Tube Construction** - Provides excellent resistance to stress cracking.
- **Food-Grade Materials** - Bevlex® 170 Series beverage hose is NSF-51/61 certified. Polyethylene material complies with FDA Regulation 21 CFR 177.1520 (c) 3.1 b for food contact under conditions of use D through H in Table 2 of 21 CFR 176.170 (c).
- **Polyester Reinforcement** - Provides pressure performance and kink-resistance exceeding that of simple tubing.
- **Bonded Abrasion-Resistant Copolymer Jacket** - Will not separate or ripple in tight bends or during installation in conduits.
- **Phthalate Free**

### Nominal Specifications

| Part <sup>†</sup><br>Number | Standard<br>Package | Nominal |         | Working Pressure (psi) |       | Weight |       | Min. Bend<br>Radius<br>(in) | Clamp<br>Size<br>(mm) |
|-----------------------------|---------------------|---------|---------|------------------------|-------|--------|-------|-----------------------------|-----------------------|
|                             |                     | ID (in) | OD (in) | 70°F                   | 122°F | (lbs)  | (kgs) |                             |                       |
| *170-041X2                  | 100' Boxed Coil     | .265    | .457    | 300                    | 150   | 6.2    | 2.8   | 1.10                        | 13.3                  |
| 170-045X2                   | 500' Boxed Spool    | .265    | .457    | 300                    | 150   | 25.1   | 11.4  | 1.10                        | 13.3                  |
| 170-045X6                   | 500' Boxed Spool    | .265    | .517    | 300                    | 150   | 34.3   | 15.6  | 1.10                        | 14.0                  |
| 170-063X0                   | 300' Boxed Spool    | .380    | .593    | 300                    | 150   | 22.9   | 10.4  | 1.75                        | 15.7                  |
| 170-065X0                   | 500' Reel           | .380    | .593    | 300                    | 150   | 40.4   | 18.3  | 1.75                        | 15.7                  |
| 170-061X1                   | 100' Boxed Coil     | .380    | .635    | 300                    | 150   | 15.0   | 6.8   | 1.75                        | 17.0                  |
| 170-063X1                   | 300' Boxed Spool    | .380    | .635    | 300                    | 150   | 45.1   | 20.5  | 1.75                        | 17.0                  |
| 170-083X0                   | 300' Wrapped Coil   | .510    | .740    | 250                    | 125   | 26.9   | 12.2  | 3.00                        | 19.8                  |
| 170-085X0                   | 500' Reel           | .510    | .740    | 250                    | 125   | 49.1   | 22.3  | 3.00                        | 19.8                  |

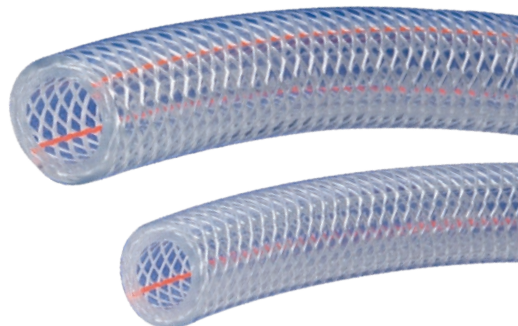
\* 100' one-piece coils may be available — ideal for kits and bag-in-box racks. NOTE: 100' lengths may be available for other sizes listed above. Check for availability.  
† Tracer yarn color coding — substitute for "X": 0 – White; 1 – Red; 2 – Blue.

Because we continually examine ways to improve our products, we reserve the right to alter specifications without notice.

# Accuflex Beverage Transfer Products

## CLEARBRAID® K3150 Series Reinforced PVC Beverage Hose

- **Construction** – Crystal clear Phthalate Free PVC compound, formulated with ingredients in compliance with applicable FDA and CFIA requirements, meets USDA, 3A, NSF, UL, RoHS and USP Class VI criteria. Reinforced with spiraled polyester yarn and longitudinal orange tracer yarns for identification.
- **Spiraled Polyester Yarn Reinforcement With Multiple Longitudinal Polyester Yarn** – Provides pressure performance and kink-resistance while reducing elongation under pressure... orange tracer yarn provides easy identification.
- **Glass Smooth Interior** – Stays clean and reduces pressure loss.
- **Phthalate Free**



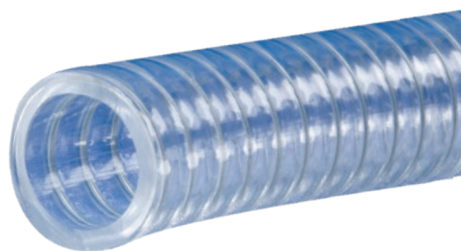
### Nominal Specifications

| Part Number | Standard Package | Nominal |         | Working Pressure (psi) |       | Weight     |       |           |       | Min. Bend Radius (in) |
|-------------|------------------|---------|---------|------------------------|-------|------------|-------|-----------|-------|-----------------------|
|             |                  | ID (in) | OD (in) | 70°F                   | 122°F | Cut Length |       | Full Coil |       |                       |
|             |                  |         |         |                        |       | (lbs)      | (kgs) | (lbs)     | (kgs) |                       |
| K3150-03    | 100'/300' Coil   | 3/16    | .375    | 250                    | 150   | 4          | 1.8   | 13        | 5.9   | 1.75                  |
| K3150-04    | 100'/300' Coil   | 1/4     | .438    | 250                    | 150   | 6          | 2.7   | 17        | 7.7   | 2.00                  |
| K3150-05    | 100'/300' Coil   | 5/16    | .531    | 250                    | 135   | 8          | 3.6   | 24        | 10.9  | 2.50                  |
| K3150-06    | 100'/300' Coil   | 3/8     | .594    | 225                    | 125   | 9          | 4.1   | 27        | 12.3  | 3.00                  |
| K3150-08    | 100'/300' Coil   | 1/2     | .750    | 200                    | 100   | 13         | 5.9   | 40        | 18.1  | 4.00                  |
| K3150-10    | 100'/200' Coil   | 5/8     | .891    | 200                    | 100   | 18         | 8.2   | 35        | 15.9  | 5.00                  |
| K3150-12    | 100'/200' Coil   | 3/4     | 1.031   | 150                    | 85    | 22         | 10.0  | 43        | 19.5  | 6.00                  |
| K3150-16    | 100'/200' Coil   | 1       | 1.300   | 125                    | 75    | 30         | 13.6  | 59        | 26.8  | 8.00                  |
| K3150-20    | 50'/100' Coil    | 1 1/4   | 1.620   | 100                    | 55    | 23         | 10.4  | 45        | 20.4  | 10.00                 |
| K3150-24    | 50'/100' Coil    | 1 1/2   | 1.938   | 100                    | 50    | 32         | 14.5  | 64        | 29.0  | 12.00                 |
| K3150-32    | 50'/100' Coil    | 2       | 2.490   | 75                     | 35    | 47         | 21.3  | 94        | 42.6  | 16.00                 |

**NOTE:** Working pressure decreases as temperature increases. Pressure ratings can only be obtained with proper coupling procedures.

## POLYSPRING® K7160 Series Reinforced PVC Vacuum & Transfer Hose

- **Construction** – Crystal clear Phthalate Free PVC compound, formulated with ingredients in compliance with applicable FDA and CFIA requirements, meets USDA, 3A, NSF, UL, USP and RoHS criteria. Reinforced with helically-wound spring steel wire.
- **Glass smooth interior** – stays clean and reduces pressure loss.
- **Suggested applications** – collapse- and crush-resistant drain lines; bag-in-box applications.
- **Phthalate Free**



### Nominal Specifications

| Part Number | Standard Package | Nominal |         | Working Pressure (psi) |       | Weight |       | Min. Bend Radius (in) |
|-------------|------------------|---------|---------|------------------------|-------|--------|-------|-----------------------|
|             |                  | ID (in) | OD (in) | 70°F                   | 122°F | (lbs)  | (kgs) |                       |
| K7160-04    | 100' Coil        | 1/4     | .447    | 150                    | 70    | 7      | 3.3   | 1                     |
| K7160-06    | 100' Coil        | 3/8     | .600    | 100                    | 70    | 11     | 5.0   | 1 1/2                 |
| K7160-08    | 100' Coil        | 1/2     | .736    | 100                    | 70    | 15     | 6.9   | 2                     |
| K7160-10    | 100' Coil        | 5/8     | .861    | 100                    | 50    | 19     | 8.8   | 2 1/2                 |
| K7160-12    | 100' Coil        | 3/4     | 1.028   | 70                     | 50    | 25     | 11.3  | 3                     |
| K7160-16    | 100' Coil        | 1       | 1.290   | 70                     | 35    | 33     | 15.0  | 4                     |
| K7160-20    | 50' Coil         | 1 1/4   | 1.604   | 70                     | 35    | 25     | 11.4  | 5                     |
| K7160-24    | 50' Coil         | 1 1/2   | 1.854   | 50                     | 30    | 29     | 13.1  | 6                     |
| K7160-32    | 50' Coil         | 2       | 2.394   | 50                     | 30    | 42     | 19.1  | 8                     |
| K7160-36    | 50' Coil         | 2 1/4   | 2.750   | 50                     | 30    | 59     | 26.8  | 9                     |
| K7160-40    | 50' Coil         | 2 1/2   | 3.000   | 50                     | 30    | 70     | 31.7  | 10                    |
| K7160-48    | 50' Coil         | 3       | 3.500   | 50                     | 30    | 82     | 37.2  | 12                    |

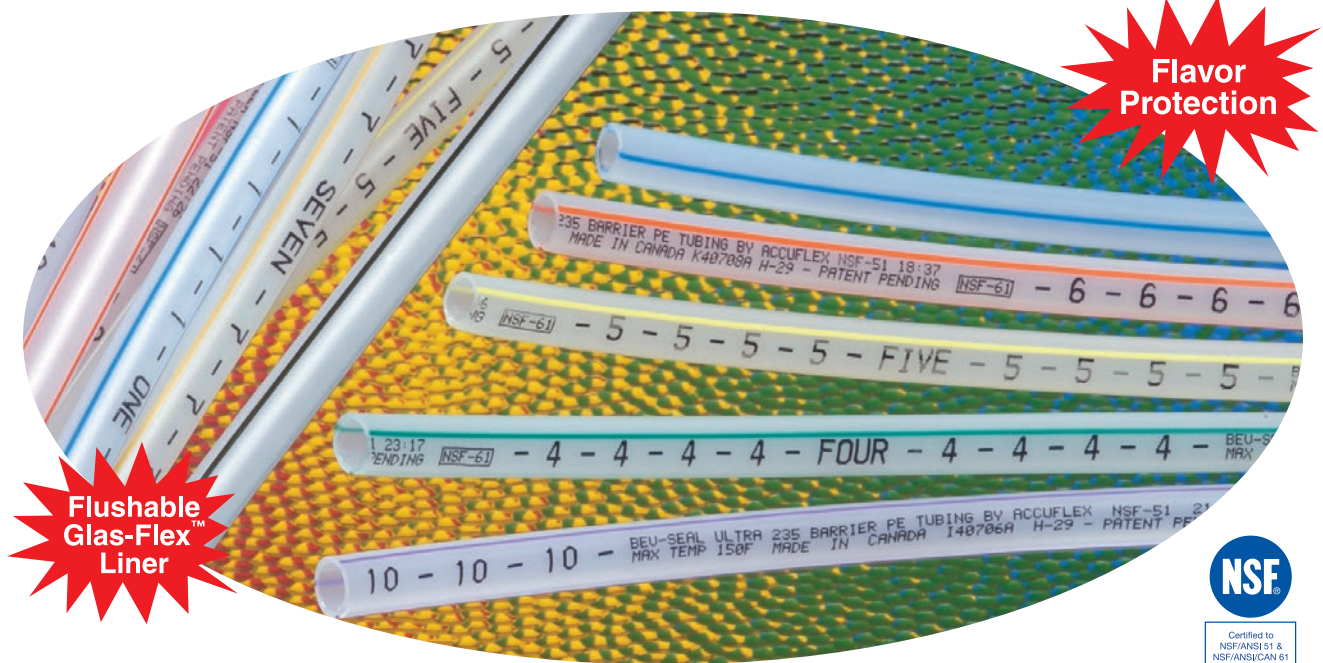
**NOTE:** Working pressure decreases as temperature increases. Pressure ratings can only be obtained with proper coupling procedures.

**CAUTION:** This product is designed to dissipate static electricity when the metal wire is properly connected to ground, through the coupling and/or other means.

Because we continually examine ways to improve our products, we reserve the right to alter specifications without notice.



# Accuflex Beverage Transfer Products



## Bev-Seal Ultra® 235 Series Tubing

Unsurpassed oxygen and flavor protection combined with flushability in a coextruded tube.

- **Flushable Glas-Flex™ Liner** — Allows change-overs from even the most pungent flavors with simple flushing procedures.
- **NSF-Certified Products** — Certified to standard NSF-51 for food equipment and NSF-61 for drinking water systems.
- **Dual-Barrier Construction** — Flushable Glas-Flex™ inner liner surrounded by a seamless extruded barrier layer in a coextruded polyolefin tube.
- **Phthalate Free**

## Nominal Specifications

| Part Number  | Standard Package  | Nominal |         | Working Pressure (psi) |       | Weight per Pkg |       | Min. Bend Radius (in) | Clamp Size (mm) |
|--------------|-------------------|---------|---------|------------------------|-------|----------------|-------|-----------------------|-----------------|
|              |                   | ID (in) | OD (in) | 70°F                   | 122°F | (lbs)          | (kgs) |                       |                 |
| 235-05620-XX | 1,000' Spool      | .190    | .313    | 150                    | 50    | 23.7           | 10.8  | 1.00                  | 8.7             |
| 235-06620-XX | 500' Spool        | .265    | .375    | 125                    | 45    | 13.2           | 6.0   | 1.25                  | 10.0            |
| 235-08620-XX | 500' Spool        | .380    | .500    | 100                    | 40    | 19.0           | 8.6   | 2.25                  | 14.0            |
| 235-10620-XX | 500' Wrapped Coil | .510    | .625    | 75                     | 30    | 20.7           | 9.4   | 10.00                 | 17.0            |

Individually numbered and color-coded tubing is available in the standard packaging as well as long-length bulk reels. A typical Part Number is 235-08620-XX for a 500 ft. spool of 3/8" size tubing, where "XX" indicates the number to be imprinted (use "00" for unnumbered tubing). The color coding is in the form of 3 colored strips 120° apart (see photo at right), and number and color coding is as follows:

XX = 01 – Blue; 02 – Black; 03 – Red; 04 – Green; 05 – Yellow; 06 – Orange; 07 – Brown; 08 – White; 09 – Pink; 10 – Purple; 11 – Black; 12 – Red; 13 – Green; 14 – Yellow; 15 – Orange; 16 – Brown, etc.

Note: The "standard packages" are those listed above.



Because we continually examine ways to improve our products, we reserve the right to alter specifications without notice.

# Accuflex Beverage Transfer Products

## Bevlex® 222/224 Series – Linear low density non-barrier polyethylene tubing



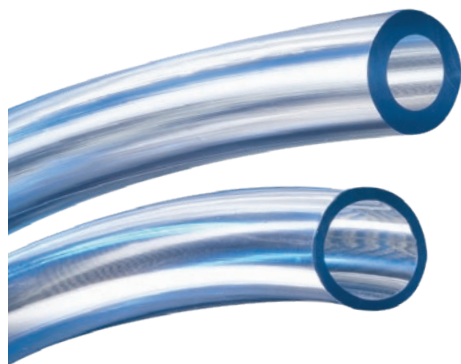
- **Polyethylene Construction** – Taste-free tube lets the true taste come through. NSF-51/61 certified. Tubing complies with FDA Regulation 21 CFR 177.1520 (c) 3.1 b for food contact under conditions of use D through H in Table 2 of 21 CFR 176.170 (c).
- **Numbered (224 Series)** – Promotes proper line connections in multiple tube applications.
- **Suggested Applications** – Syrup transfer, liquor service.
- **Phthalate Free**

### Nominal Specifications

| Part Number   | Standard Package  | Nominal |         | Working Pressure (psi) |       | Weight |       | Min. Bend Radius (in) | Clamp Size (mm) |
|---------------|-------------------|---------|---------|------------------------|-------|--------|-------|-----------------------|-----------------|
|               |                   | ID (in) | OD (in) | 70°F                   | 122°F | (lbs)  | (kgs) |                       |                 |
| 222-0440X2K   | 2000' Boxed Spool | .170    | .250    | 125                    | 50    | 24.5   | 11.1  | 1.00                  | 7.0             |
| 222-0440X500  | 500' Boxed Spool  | .170    | .250    | 125                    | 50    | 7.1    | 3.2   | 1.00                  | 7.0             |
| 222-0662X500  | 500' Boxed Spool  | .265    | .375    | 125                    | 50    | 14.7   | 6.7   | 1.25                  | 10.0            |
| 222-0862X500  | 500' Boxed Spool  | .380    | .500    | 100                    | 35    | 20.2   | 9.2   | 2.00                  | 14.0            |
| 222-1062X500  | 500' Wrapped Coil | .510    | .625    | 75                     | 25    | 24.2   | 11.0  | 6.00                  | 17.0            |
| †224-06620-XX | 500' Boxed Spool  | .265    | .375    | 125                    | 50    | 14.7   | 6.7   | 1.25                  | 10.0            |
| †224-08620-XX | 500' Boxed Spool  | .380    | .500    | 100                    | 35    | 20.2   | 9.2   | 2.00                  | 14.0            |
| †224-10620-XX | 500' Wrapped Coil | .510    | .625    | 75                     | 25    | 24.2   | 11.0  | 6.00                  | 17.0            |

Note: 222 Series solid color NSF-51 listed versions are available on special order . . . Minimum quantities will apply. † Number coded 1 – 12

## Kuri Tec Klearon™ 73 K010 Series Clear Food-Grade PVC Tubing



- **Construction** – Crystal clear Phthalate Free PVC compound, formulated with ingredients in compliance with applicable FDA and CFIA requirements, meets USDA, 3A, NSF, UL, RoHS and USP Class VI criteria.
- **Crystal Clarity** – Enables easy monitoring of flow.
- **Glass Smooth Interior** – Provides minimal flow resistance.
- **Available in Several Wall Thicknesses** – To suit specific needs.
- **Tight Dimensional Tolerances** – Make it easy to get consistent fitting retention with standard fittings.
- **Phthalate Free**

### Nominal Specifications

| Part Number | Standard Package   | Nominal |         | Working Pressure (psi) |       | Weight |       | Min. Bend Radius (in) | Clamp Size (mm) |
|-------------|--------------------|---------|---------|------------------------|-------|--------|-------|-----------------------|-----------------|
|             |                    | ID (in) | OD (in) | 70°F                   | 122°F | (lbs)  | (kgs) |                       |                 |
| K010-0406   | 100' Payout Carton | 1/4     | 3/8     | 55                     | 20    | 3.4    | 1.5   | 3.5                   | 10.0            |
| K010-0509   | 100' Payout Carton | 5/16    | 9/16    | 60                     | 25    | 9.4    | 4.3   | 3.7                   | 15.7            |
| K010-0609   | 100' Payout Carton | 3/8     | 9/16    | 45                     | 12    | 4.7    | 2.1   | 5.0                   | 15.7            |
| K010-0610   | 100' Payout Carton | 3/8     | 5/8     | 55                     | 20    | 10.7   | 4.9   | 4.5                   | 17.0            |
| K010-0810   | 100' Payout Carton | 1/2     | 5/8     | 30                     | 7     | 6.0    | 2.7   | 7.5                   | 17.0            |
| K010-0811   | 100' Payout Carton | 1/2     | 11/16   | 40                     | 10    | 9.5    | 4.3   | 7.0                   | 19.8            |
| K010-0812   | 100' Payout Carton | 1/2     | 3/4     | 45                     | 12    | 13.4   | 6.1   | 6.0                   | 19.8            |
| K010-1014   | 100' Boxed Coil    | 5/8     | 7/8     | 40                     | 10    | 16.1   | 7.3   | 8.0                   | 22.6            |
| K010-1216   | 100' Boxed Coil    | 3/4     | 1       | 35                     | 8     | 18.8   | 8.5   | 10.5                  | 27.1            |
| K010-1620   | 100' Wrapped Coil  | 1       | 1 1/4   | 25                     | 5     | 24.1   | 11.0  | 12.0                  | 33.1            |

Because we continually examine ways to improve our products, we reserve the right to alter specifications without notice.



# Accuflex Beverage Transfer Products

## **Bevlex® 200 Series PVC tubing for bag-in-box soft drink applications and draft beer transfer**

- Special dual durometer construction combines a low extraction inner contact surface with a flexible outer layer for excellent kink resistance and taste protection properties.
- Clear Food Grade liner materials free from colorants comply with FDA CFR Title 21 Parts 170 to 199 . . . NSF-51 Listed. Phthalate Free.



### **Bevlex® 200 Series Clear PVC tubing for bag-in-box soft drink applications and draft beer transfer**

#### **Nominal Specifications**

| Part Number | Standard Package   | Nominal |         | Working Pressure |       | Weight |       | Min. Bend Radius (in) | Clamp Size (mm) |
|-------------|--------------------|---------|---------|------------------|-------|--------|-------|-----------------------|-----------------|
|             |                    | ID (in) | OD (in) | 70°F             | 122°F | (lbs)  | (kgs) |                       |                 |
| 200-0307*   | 100' Payout Carton | 3/16    | 7/16    | 80               | 26    | 6.7    | 3.0   | 2.0                   | 12.3            |
| 200-0408    | 100' Payout Carton | 1/4     | 1/2     | 70               | 23    | 8.0    | 3.6   | 3.0                   | 13.3            |
| 200-0509*   | 100' Payout Carton | 5/16    | 9/16    | 60               | 20    | 9.4    | 4.3   | 3.7                   | 15.7            |
| 200-0609    | 100' Payout Carton | 3/8     | 9/16    | 40               | 13    | 7.7    | 3.5   | 5.0                   | 15.7            |
| 200-0610*   | 100' Payout Carton | 3/8     | 5/8     | 50               | 16    | 10.7   | 4.9   | 4.5                   | 17.0            |

\* Available in 500 ft. lengths



### **Bevlex® 203 Series BLACK PVC BEER TUBING for carbon dioxide supply lines**

|          |                    |      |      |    |    |      |     |     |      |
|----------|--------------------|------|------|----|----|------|-----|-----|------|
| 203-0307 | 100' Payout Carton | 3/16 | 7/16 | 80 | 26 | 6.7  | 3.0 | 2.0 | 12.3 |
| 203-0610 | 100' Payout Carton | 3/8  | 5/8  | 50 | 16 | 10.7 | 4.9 | 4.5 | 17.0 |



### **Bevlex® 204 Series RED PVC BEER TUBING for air supply lines**

|           |                    |      |      |    |    |      |     |     |      |
|-----------|--------------------|------|------|----|----|------|-----|-----|------|
| 204-0509* | 100' Payout Carton | 5/16 | 9/16 | 60 | 20 | 9.4  | 4.3 | 3.7 | 15.7 |
| 204-0610  | 100' Payout Carton | 3/8  | 5/8  | 50 | 16 | 10.7 | 4.9 | 4.5 | 17.0 |

\* Available in 500 ft. lengths



### **Bevlex® 209B Series BLUE PVC BEER TUBING for air supply lines**

|            |                    |      |      |    |    |     |     |     |      |
|------------|--------------------|------|------|----|----|-----|-----|-----|------|
| 209B-0509* | 100' Payout Carton | 5/16 | 9/16 | 60 | 20 | 9.4 | 4.3 | 3.7 | 15.7 |
|------------|--------------------|------|------|----|----|-----|-----|-----|------|

\* Available in 500 ft. lengths



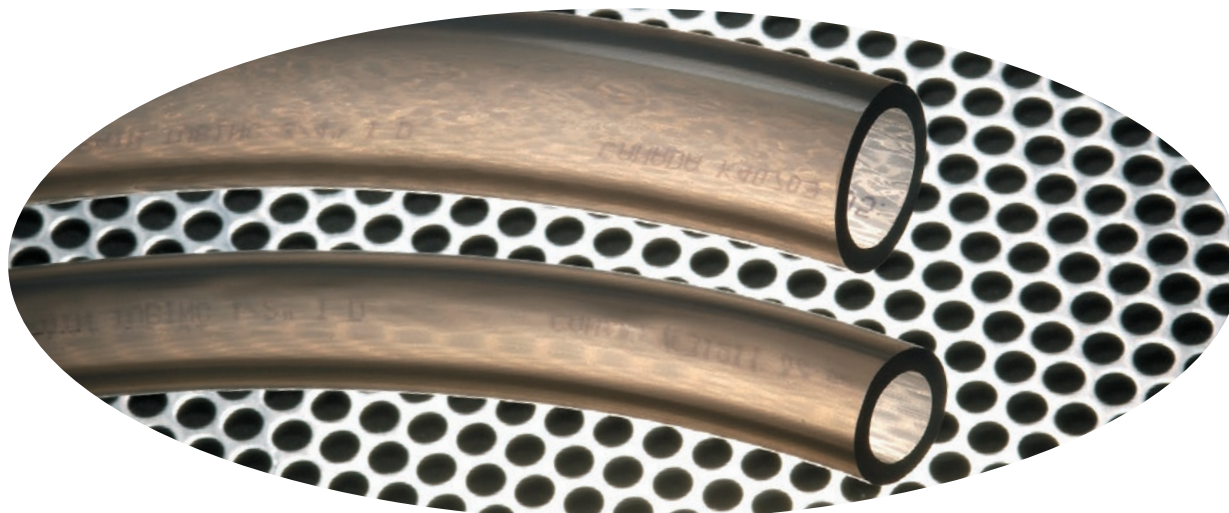
### **Bevlex® 209D (BLUE) and 209R (RED) Series Translucent PVC BEER TUBING for air supply lines**

|            |                    |      |      |    |    |     |     |     |      |
|------------|--------------------|------|------|----|----|-----|-----|-----|------|
| 209D-0509* | 100' Payout Carton | 5/16 | 9/16 | 60 | 20 | 9.4 | 4.3 | 3.7 | 15.7 |
| 209R-0509* | 100' Payout Carton | 5/16 | 9/16 | 60 | 20 | 9.4 | 4.3 | 3.7 | 15.7 |

\* Available in 500 ft. lengths

Because we continually examine ways to improve our products, we reserve the right to alter specifications without notice.

# Accuflex Beverage Transfer Products



## **Sani-Clean AM™ 218 Series Drain Tubing — Added confidence in drain hygiene**

**Construction:** Special proprietary compound incorporating an EPA-listed anti-microbial additive which discourages the development of fungal growth on the inner and outer tubing surfaces. The tubing's unique translucent metallic gray color gives it a sanitary appearance, while still allowing a visual inspection of the line while in service. Phthalate Free.

### **Nominal Specifications**

| Part Number | Standard Package   | Nominal |         | Working Pressure (psi) |       | Weight |       | Min. Bend Radius (in) | Clamp Size (mm) |
|-------------|--------------------|---------|---------|------------------------|-------|--------|-------|-----------------------|-----------------|
|             |                    | ID (in) | OD (in) | 70°F                   | 122°F | (lbs)  | (kgs) |                       |                 |
| 218-0812    | 100' Payout Carton | 1/2     | 3/4     | 45                     | 12    | 13.4   | 6.1   | 6.0                   | 19.8            |
| 218-1014    | 100' Boxed Coil    | 5/8     | 7/8     | 40                     | 10    | 16.1   | 7.3   | 8.0                   | 22.6            |
| 218-1216    | 100' Boxed Coil    | 3/4     | 1       | 39                     | 8     | 18.8   | 8.5   | 9.0                   | 27.1            |
| 218-1418    | 100' Boxed Coil    | 7/8     | 1 1/8   | 30                     | 6     | 21.4   | 9.7   | 10.5                  | 28.6            |
| 218-1620    | 100' Wrapped Coil  | 1       | 1 1/4   | 25                     | 5     | 24.1   | 11.0  | 12.0                  | 33.1            |

### **Anti-microbial drain line tubing inhibits growth of**

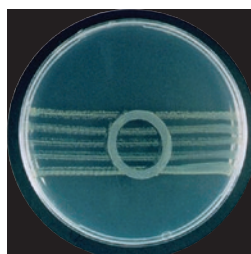
- Gram positive bacteria
- Gram negative bacteria
- Fungi, mold and yeast

### **Drain lines for**

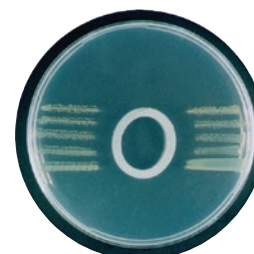
- Ice machines
- Dispensing equipment
- Condensate drains
- Wherever protection from microorganisms is needed!!!

### **Demonstration of the Effectiveness of Sani-Clean AM™ Tubing**

The photos below illustrate the effectiveness of the antimicrobial ingredients present in **Sani-Clean AM™** tubing. Using test AATCC Method 147-1998, a small cross-section each of regular PVC drain tubing and **Sani-Clean AM™** tubing were placed on agar in petri dishes, after bacteria had been deposited in stripes over the agar. Traces of the antimicrobial in parts per million diffuse into the agar creating the clear growth-free zone around the tubing. The area of the growth-free zone illustrates the effectiveness of the antimicrobial.



Regular PVC Drain Tubing



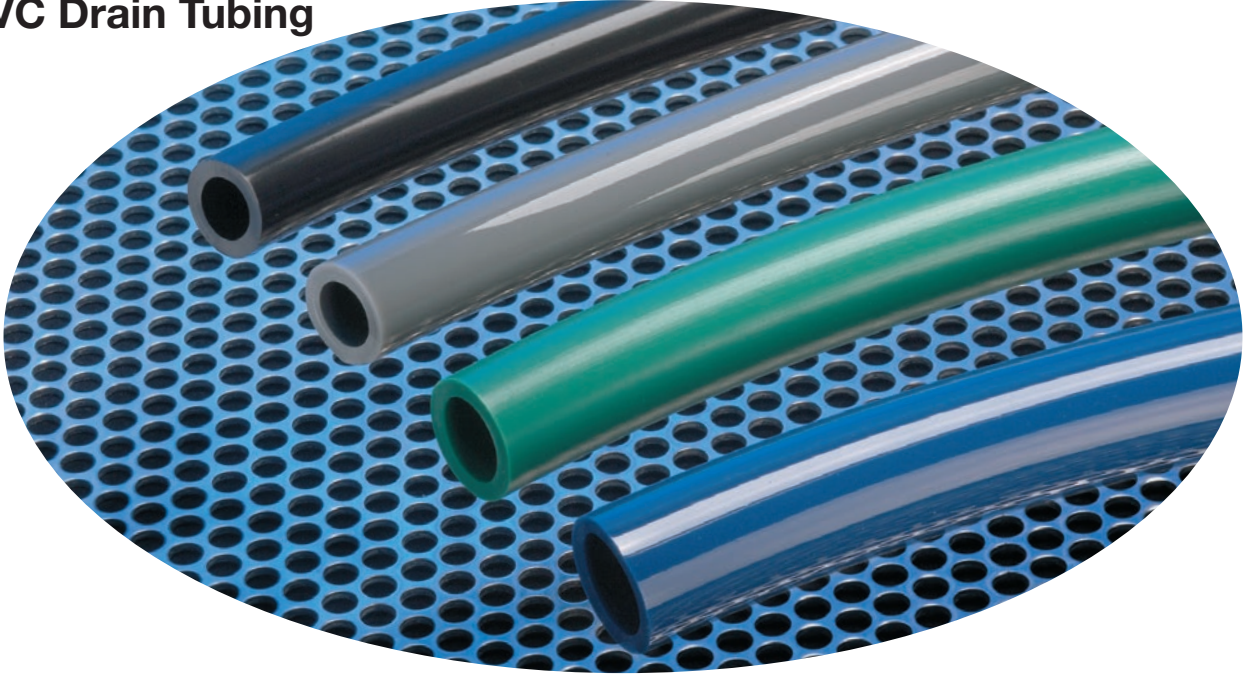
Sani-Clean AM™

Because we continually examine ways to improve our products, we reserve the right to alter specifications without notice.



# Accuflex Beverage Transfer Products

## PVC Drain Tubing



Industrial grade PVC tube construction providing lightweight flexibility, kink-resistance and economy. Two basic colors are black and gray, with selected sizes available in blue and green as well. Phthalate Free.

### 213 Series Black PVC Drain Tubing

#### Nominal Specifications

| Part Number | Standard Package   | Nominal |         | Working Pressure (psi) |       | Weight |       | Min. Bend Radius (in) | Clamp Size (mm) |
|-------------|--------------------|---------|---------|------------------------|-------|--------|-------|-----------------------|-----------------|
|             |                    | ID (in) | OD (in) | 70°F                   | 122°F | (lbs)  | (kgs) |                       |                 |
| 213-0812    | 100' Payout Carton | 1/2     | 3/4     | 45                     | 12    | 13.4   | 6.1   | 6.0                   | 19.8            |
| 213-1014    | 100' Boxed Coil    | 5/8     | 7/8     | 40                     | 10    | 16.1   | 7.3   | 8.0                   | 22.6            |
| 213-1216    | 100' Boxed Coil    | 3/4     | 1       | 39                     | 8     | 18.8   | 8.5   | 10.5                  | 27.1            |
| 213-1620    | 100' Wrapped Coil  | 1       | 1 1/4   | 25                     | 5     | 24.1   | 11.0  | 12.0                  | 33.1            |

### 215 Series Gray PVC Drain Tubing

#### Nominal Specifications

| Part Number | Standard Package   | Nominal |         | Working Pressure (psi) |       | Weight |       | Min. Bend Radius (in) | Clamp Size (mm) |
|-------------|--------------------|---------|---------|------------------------|-------|--------|-------|-----------------------|-----------------|
|             |                    | ID (in) | OD (in) | 70°F                   | 122°F | (lbs)  | (kgs) |                       |                 |
| 215-0812    | 100' Payout Carton | 1/2     | 3/4     | 45                     | 12    | 13.4   | 6.1   | 6.0                   | 19.8            |
| 215-1014    | 100' Boxed Coil    | 5/8     | 7/8     | 40                     | 10    | 16.1   | 7.3   | 8.0                   | 22.6            |
| 215-1216    | 100' Boxed Coil    | 3/4     | 1       | 39                     | 8     | 18.8   | 8.5   | 10.5                  | 27.1            |
| 215-1418    | 100' Boxed Coil    | 7/8     | 1 1/8   | 30                     | 6     | 21.4   | 9.7   | 10.5                  | 28.6            |
| † 215-1620  | 100' Wrapped Coil  | 1       | 1 1/4   | 25                     | 5     | 24.1   | 11.0  | 12.0                  | 33.1            |

† Semi-stock item, may require minimum run of 25,000 feet.

### Special Color Coded PVC Drain Tubing

#### Nominal Specifications

| Part Number | Standard Package | Nominal |         | Working Pressure (psi) |       | Weight |       | Min. Bend Radius (in) | Clamp Size (mm) |
|-------------|------------------|---------|---------|------------------------|-------|--------|-------|-----------------------|-----------------|
|             |                  | ID (in) | OD (in) | 70°F                   | 122°F | (lbs)  | (kgs) |                       |                 |
| Green       |                  |         |         |                        |       |        |       |                       |                 |
| 213G-1014   | 100' Boxed Coil  | 5/8     | 7/8     | 40                     | 10    | 16.1   | 7.3   | 8.0                   | 22.6            |
| Blue        |                  |         |         |                        |       |        |       |                       |                 |
| 213B-1216   | 100' Boxed Coil  | 3/4     | 1       | 39                     | 8     | 18.8   | 8.5   | 10.5                  | 27.1            |

Because we continually examine ways to improve our products, we reserve the right to alter specifications without notice.

# Accuflex Beverage Transfer Products

## Flexible Insulated Drain Hoses

### Featuring Tigerflex™ Brand Drain Hose

#### Features and Benefits:

- **Convuluted Construction** - Provides exceptional kink resistance that provides a very tight bend radius for difficult installations.
- **Smooth Bore** - Minimizes internal flow restrictions.
- **Antimicrobial Insulation** - Inhibits growth of bacteria and other micro-organisms.
- **Snug Fitting Insulation** - Minimizes air entrapment beneath the insulation and condensation that might otherwise form.
- **Convenient Sizes** - Available ID sizes are 1/2", 3/4" and 1" to fit most applications.
- **Convenient Lengths** - hoses are furnished in nominal 72" lengths.
- **Phthalate Free**

#### General Applications:

- Drains on ice makers and beverage dispensing units

#### Construction:

Smooth bore flexible PVC with rigid PVC helix reinforcement.

#### Service Temperature:

-4°F (-20°C) to 150°F (+65°C)



**For under-the-counter and fountain head areas; keeps condensation from forming on the Drain Hose and then dripping on floor area.**

### Nominal Specifications

| Part Number | Nominal |         |         |         | Working Pressure (psi) |       | Vacuum Rating Hg (in) at 68°F |       | Min. Bending Radius at 68°F (in) | Weight (lbs/ft) |
|-------------|---------|---------|---------|---------|------------------------|-------|-------------------------------|-------|----------------------------------|-----------------|
|             | ID (in) | ID (mm) | OD (in) | OD (mm) | 68°F                   | 104°F | 68°F                          | 104°F |                                  |                 |
| A15-DHG050  | 1/2     | 12.7    | 0.67    | 17.0    | 38                     | 20    | 23                            | 13    | 0.50                             | 0.12            |
| A15-DHG20MM | 3/4     | 20.2    | 1.06    | 26.8    | 36                     | 18    | 22                            | 12    | 0.75                             | 0.16            |
| A15-DHG27MM | 1       | 26.5    | 1.36    | 34.5    | 36                     | 18    | 22                            | 12    | 1.00                             | 0.25            |

## Flexible Non-Insulated Drain Hoses

### Featuring Tigerflex™ Brand Drain Hose

#### Features and Benefits:

- **Convuluted Construction** - Provides exceptional kink resistance that provides a very tight bend radius for difficult installations.
- **Smooth Bore** - Minimizes internal flow restrictions.
- **Convenient Sizes** - Available ID sizes are 1/2", 3/4" and 1" to fit most applications.
- **Convenient Lengths** - Hoses are furnished in 100 ft. and 25 ft. lengths.
- **Phthalate Free**

#### General Applications:

- Drains on ice makers and beverage dispensing units

#### Construction:

Smooth bore flexible PVC with rigid PVC helix reinforcement.

#### Service Temperature:

-4°F (-20°C) to 150°F (+65°C)



### Nominal Specifications

| Part Number | Nominal |         |         |         | Working Pressure (psi) |       | Vacuum Rating Hg (in) at 68°F |       | Min. Bending Radius at 68°F (in) | Weight (lbs/ft) |
|-------------|---------|---------|---------|---------|------------------------|-------|-------------------------------|-------|----------------------------------|-----------------|
|             | ID (in) | ID (mm) | OD (in) | OD (mm) | 68°F                   | 104°F | 68°F                          | 104°F |                                  |                 |
| DHG050X100  | 1/2     | 12.7    | 0.67    | 17      | 38                     | 20    | 23                            | 13    | 0.50                             | 0.07            |
| DHG050X25   | 1/2     | 12.7    | 0.67    | 17      | 38                     | 20    | 23                            | 13    | 0.50                             | 0.07            |
| DHG20MMX100 | 3/4     | 20.2    | 1.06    | 26.8    | 36                     | 18    | 22                            | 12    | 0.75                             | 0.13            |
| DHG20MMX25  | 3/4     | 20.2    | 1.06    | 26.8    | 36                     | 18    | 22                            | 12    | 1.00                             | 0.20            |
| DHG27MMX100 | 1       | 26.5    | 1.36    | 34.5    | 36                     | 18    | 22                            | 12    | 1.00                             | 0.20            |
| DHG27MMX25  | 1       | 26.5    | 1.36    | 34.5    | 36                     | 18    | 22                            | 12    | 1.00                             | 0.20            |

Because we continually examine ways to improve our products, we reserve the right to alter specifications without notice.



# Accuflex Beverage Transfer Products

## Accu-Cutter™ Tubing, Hose & Bundle Cutters

- We offer five tools for use in cutting Bundles - Hose - Tubing & Slitting Bundle Jacket Covers
- The cutting tools can handle a variety of sizes up to 2-1/2" OD Bundles.

Note: Best Practices require that all hose and tubing be cut clean and square before inserting fittings. The Accuflex Cutting Tools when used properly and blades kept sharp, will cut clean and square.



### Part No. 957-01000-00 One Handed Ratchet Bundle Cutter

- Cuts up to 2 1/2" OD Bundles
- Weight 1.4 lbs



### Part No. 951-01000-00 Bundle Cover Slitter

- Easily slides in from the end between Hose/Tubes and Bundle Jacket.
- Weight 1.4 oz



### Part No. 958-01000-00 Medium Cutter

- Medium Hose and Tubing Cutter
- Cuts up to 1 5/8" Hose and Tubing
- Weight 4.3 oz.



### Part No. 954-01000-00 Large Cutter

- Large Bundle - Hose - Tubing Cutter
- Cuts up to 1 7/8" OD Bundle - Hose and Tubing
- Weight 5.0 oz



### Part No. 959-01000-00 Kuri Snip Cutter

- Kuri Snip Cutter
- Cuts up to 1/2" OD Hose and Tubing - used to clean and square up ends
- Weight 0.91 oz

## Replacement Blades



### Part No. 957-03000-00 Replacement blade for One Handed Ratchet Cutter

Large Bundle - Hose - Tubing Cutter



### Part No. 954-03 Replacement blade for Large Cutter

Large Bundle - Hose - Tubing Cutter



### Part No. 958-03 Replacement blade for Medium Cutter

Medium Hose and Tubing Cutter



### Part No. 959-03 Replacement blade for Kuri Snip Cutter

Because we continually examine ways to improve our products, we reserve the right to alter specifications without notice.

# Accuflex Beverage Transfer Products

## Best Practices — Installation of **Bev-Seal Ultra®** Lined hose, tubing & bundles

### Cable Puller

Recently, there has been a major change in the hose and tubing used in beverage dispensing applications.

At the request of the major beverage manufacturers, a flushable design and construction for hose and tubing was developed, tested and approved. Unlike conventional polyethylene hose and tubing, the new product has a liner that eliminates permeation and is flushable. Not just "good enough," but truly flushable.

Used in both **Bev-Seal Ultra®** Series 175 hose and Series 235 tubing, this liner is made from a relatively hard resin. This introduces some different handling requirements.

**Installation of bundles** – When pulling a bundle through a chase, the use of a cable puller is highly recommended. This makes the process easier and minimizes the chance of stretching a single line, damaging the liner or reducing the flow rates.

**Cutting** – Sharp tools are necessary, not just for ease of cutting but to better slice through the liner. It is also recommended that, after installing a bundle, the individual ends be trimmed prior to the installation of fittings.

**Fitting installation** – When installing fittings, use of a water spray as a lubricant will ease the job.

**Hot water rinse** – After installation, a 10-minute hot

### Sharp Tools

### Hot Water Rinse

### Sanitize

water rinse applied to hose, tubes and bundles is recommended to rinse out any debris and relieve stress in the liner(s).

**Sanitizing** – The use of standard sanitizers is encouraged, but care should be taken not to exceed the recommended concentration, particularly with strongly alkaline solutions. It is essential that all sanitizers be flushed out thoroughly with a 5 to 10 minute hot water flush.

**Pinching off the ends of a hose or tube** – Although we recognize that there are some situations that may arise that require this practice, such as during the repair and maintenance of equipment, it is not generally recommended that hose or tubing be pinched off. Doing so, unless followed by a hot water rinse, creates stress in the liner which may lead to premature failure.

**Flavor changes** – **Bev-Seal Ultra®** hose and tubing products allow changes from pungent flavors to non-pungent flavors with a relatively simple flushing procedure. It is suggested that the tube or hose carrying the pungent flavor be rinsed out with water until the water runs clear, then be flushed with a mild sanitizer for 10 minutes. The sanitizer can then be flushed out with hot water for 10 to 15 minutes before introducing the new flavor. This procedure is effective with even the most pungent beverages, including fruit flavors.



# Accuflex Beverage Transfer Products

## Frequently Used Terms

- **Barrier** — A special layer applied to hose or tubing that is designed to prevent permeation or contamination. Advantages: Flavor protection, longer service life. Disadvantage: Stiffer.
- **Bundle** — Multiple tubes and/or hoses wrapped together closely to form a compact unit. Advantages: Easy to install, saves labor. Disadvantage: Lines need barrier protection.
- **Cabled bundle** — Twisted bundle construction to increase overall flexibility. Advantage: Easier to install. Disadvantage: Costs more to produce.
- **Flushable** — The ability to rinse out a previous flavor from a hose or tube. Advantages: Can change flavors without danger of flavor contamination. Disadvantage: Costs more.
- **Hose** — Multi-layered cylindrical shape; has core tube, reinforcement and cover. Advantage: Higher working pressure. Disadvantages: Bulkier and heavier.
- **Insulated bundle** — Bundle with insulation, used in recirc and beer installations. Advantage: Helps keep beverages cold. Disadvantages: Costs more, bulkier.
- **Non-Barrier** — Hose or tubing which does not contain the special barrier layer. Advantages: Costs less. Disadvantages: No flavor protection, shorter service life.
- **Non-Flushable** — The inability to rinse out previous flavors from a hose or tube without the danger of flavor contamination. Advantage: Costs less. Disadvantage: May have to replace the hose or tube in order to safely change flavor.
- **Permeation** — The movement of molecules from an area of high concentration to one of low concentration until equilibrium is obtained. Advantage: Rids smoke. Disadvantage: Makes it necessary to use barriers.
- **Phthalate Free** — Manufactured from all phthalate free materials.
- **Tubing** — Cylindrical shape, sometimes called a core tube, no reinforcement. Advantages: Less bulky, lighter weight. Disadvantage: Lower working pressure.
- **Uninsulated bundle** — Bundle with no insulation, used for room temperature runs. Advantages: Less costly, less bulky. Disadvantage: No thermal protection.

## Frequently Asked Questions

**Q:** What is the difference between tubing and hose?

**A:** Tubing has a simple single wall, and a lower pressure rating. Hose has several layers and is reinforced for higher pressures and, while it is slightly stiffer, it usually has a smaller bend radius.

**Q:** What does "Barrier" and "Non-Barrier" mean?

**A:** A "Barrier" is a layer in the hose or tube that prevents flavors from permeating through the wall and contaminating other flavors, for example, root beer flavor penetrating into a tube carrying a lemon-lime beverage and contaminating its flavor. A hose or tube that is a "Non-Barrier" product has no such protection from permeation and flavor contamination.

**Q:** What does the term "flushable" refer to?

**A:** The term "flushable" refers to the ability of a hose or tube to have a flavor rinsed out completely and then begin carrying a new flavor with no taste carryover.

**Q:** What is the difference between cabled bundles and non-cabled bundles?

**A:** Cabled bundles are twisted during assembly to give them greater flexibility. Non-cabled bundles are simply hoses and/or tubes grouped together in parallel bundles. They are fine for short runs, but are fairly stiff and hard to bend.

**Q:** What do you mean when you talk about permeation?

**A:** All plastics permeate. This means that molecules of flavor penetrate into the plastic core tubes and, in many cases, they can get all the way through a hose or tube and even get into an adjacent hose or tube. This causes flavor mixing and flavor contamination. Accuflex's dual barrier hoses and tubes are 500+ times less permeable than most plastic hoses and tubes.

**Q:** What is flavor ingress or cross-tasting, and what precautions can be taken to prevent it?

**A:** Organic liquids and vapors can permeate through essentially all plastic and rubber materials to some extent. The rate of permeation is determined by the chemical nature of the organic substance and of the polymeric material. Although polyethylene is a very inert material, containing few extractable components and having excellent resistance to water absorption, it has relatively low resistance to permeation by organic hydrocarbons and oily substances. When a flavor or contaminant permeates from the surrounding environment through the hose or tubing into the contained beverage, flavor ingress or cross-tasting is said to have occurred.

Plastics that display excellent resistance to permeation are considered to be "barrier resins." A layer of these barrier

Because we continually examine ways to improve our products, we reserve the right to alter specifications without notice.

# Accuflex Beverage Transfer Products

## Frequently Asked Questions (continued)

resins can be incorporated into a hose or tube as an overlapping layer or as a seamless co-extrusion. Although very thin when compared to the rest of the hose or tubing wall, the barrier layers offer effective protection against flavor ingress.

When hose or tubing is exposed to cleaning fluids or environmental contaminants, or when the lines are confined in close proximity to each other, as in a bundle or conduit, the flavors of beverages inside the hose or tubing can be affected by flavor ingress or cross-tasting. We recommend that barrier-style hoses, tubing, or bundles be used in these situations.

**Q:** Do some flavors cross-taste more than others?

**A:** Most non-barrier hoses and tubes use polyethylene as the primary material. Polyethylene allows most organic hydrocarbons to permeate relatively quickly without causing any physical change in the polyethylene itself. The rate of permeation is approximately the same for each flavor, but the level at which a given flavor can be detected may vary greatly. Pungent flavors such as root beer, cherry, or strawberry are very strong, and can be detected at very low levels, as compared to non-pungent flavors. Therefore, a pungent flavor will be detected as a contaminant in a non-pungent flavor relatively easily. Furthermore, fruit flavors based on limonene are readily absorbed and held by polyethylene, which releases it slowly to the atmosphere or the beverage contained inside the tube. The high absorption level and slow release are the reasons why fruit flavors are so difficult to flush out of polyethylene hose or tubing.

**Q:** Water, syrup or CO<sub>2</sub> . . . which hose or tube is best for what?

**A:** The main criteria in choosing the proper hose or tube are the physical conditions such as pressure, temperature, and environment. Particular attention must be paid to pressurized lines such as CO<sub>2</sub> transfer lines in which higher pressures may require the use of hose instead of tubing, keeping in mind that pressure ratings are reduced at higher temperatures.

Secondly, the environment must be considered to determine if there is a need for barrier protection, such as installations in a floor chase or individual lines in a bundle carrying pungent flavors. Water lines in particular must be protected from contamination, whether run inside a bundle or alongside it.

**Q:** What size and type of clamp should be used?

**A:** To obtain uniform compression around the tube or hose, we recommend the use of a stepless ear-type clamp. The clamp must be sized so that it will still slide over the tube after the barbed fitting is inserted, and exert sufficient compression on the materials before the clamp is fully closed. When soft materials are involved, it must be recognized that the clamp will sink into the materials somewhat, perhaps necessitating a smaller sized clamp. When properly sized, the sides of the ear should not be touching each other when the clamp is installed.

**Q:** How tightly can beverage lines be bent in a permanent installation?

**A:** The minimum bend radius values shown in this catalog represent the smallest curvature to which a product should be exposed in an positive pressure installation at room temperature, as measured in the inside of the curve. Minimum bend radius depends upon diameter, wall thickness, material hardness and elasticity, and application conditions. If negative pressures or elevated temperatures are involved, larger values should be considered. As a general rule of thumb, a minimum bend radius for a hose or tube is 10 times the OD of the product. This is a conservative value and should apply to most products, unless very thin walled hoses or tubes are involved.

**Q:** What fire regulations must be considered when installing beverage lines?

**A:** All beverage lines must be installed in accordance with all applicable regulations and building codes. The most common questions involve the use of lines in ceilings, and, in particular, in plenums. A plenum is an area from which air can be drawn into the living space in a building through the heating or air conditioning systems. A plenum may be a specific air duct, or could be an entire attic area. In the event of a fire, it is important that the materials inside a plenum not generate any significant level of toxic smoke. Halogenated materials such as PVC are of concern in such areas, and should be enclosed in a fire resistant chase.

All materials used in a plenum must be “non-combustible” as defined by standards such as ASTM E-84 in the USA or CAN/ULC S102.2 in Canada. In both of these standards, the maximum values for flame spread and smoke generation are 25 and 50 respectively. Since the primary concerns in the design of beverage hose and tubing are taste integrity and health safety, flame retardant additives cannot be added directly to any components that may be exposed to the beverage. Therefore, the products must contain barrier layers to ensure that no flame retardants migrate to the contact surface. Accuflex’s **Bev-Seal Ultra**® Series 235FR, 175FR, and 974FR Fire Resistant tubing, hose and bundles satisfy these requirements with a 0/0 rating.

**Q:** What is the difference between standards NSF-51 and NSF-61?

**A:** The National Sanitation Foundation has issued two standards that can relate directly to beverage applications. Standard NSF-51 covers Food Equipment and Related Products, Components and Materials, and includes dispensers and other equipment involved in the preparation, storage or transfer of foods and beverages (including alcoholic beverages). The criteria relate somewhat to FDA regulations. Standard NSF-61 covers Drinking Water System Component – Health Effects, and includes all equipment that comes in contact with drinking water. These criteria are based on EPA guidelines. Many of our hose and tubing products carry both NSF-51 and NSF-61 listings, so that they can be used with both drinking water and prepared beverages.



# Accuflex Beverage Transfer Products

## Care and storage



## Storage Precautions

To assure satisfactory performance when installed on beverage equipment, it is important that hose, tubing and bundles be stored properly prior to installation. It is necessary to guard against conditions which could create odors within the hose or tubing and/or conditions which could lead to degradation or physical damage. Conditions to avoid:

**Excessive heat** – Storage conditions above 90° F. will cause some odor buildup inside the hose which will necessitate more flushing prior to placing the hose in service.

**Moisture** – Excessive humidity can have an effect on cardboard boxes and spools, reducing their strength and, under extreme conditions, causing mildew and unpleasant odors which could affect the hose.

**Sunlight and weathering** – Although sunlight alone will not adversely affect hose that is still in its original carton, direct prolonged exposure of the product to sunlight could cause some yellowing of the EVA and polyethylene and heat buildup in coils and spools. Avoid outdoor storage of spools or coils.

**Contaminating odors** – Make sure the product is not stored near contaminating odors such as solvent fumes, automobile exhaust fumes, rubber goods, etc. The ambient air could enter the tubing and leave an odor inside.

**Rodent or insect attack** – Avoid storing hose and tubing in areas where rodents or insects could damage or enter the product.

**Crushing due to excessive weight** – Hose & tubing bundles: When stacking several coils of bundle product on a pallet, avoid overhangs which could create excessive localized pressure on the coil at the edge of the pallet. Hose and tubing: Pallets may be stacked two high for brief periods of time, provided the top layer of cartons on the lower pallet is suitably protected from damage by the wooden skid of the top pallet. Avoid long term storage of stacks exceeding twelve boxes high or an overall height of eight feet.

## Handling Precautions

When installing barbed fittings, ensure that there are no burrs or nicks on the fitting that could damage the tube surface or cause leaks.

If a hose is inadvertently kinked during installation, ensure that the hose or tube is not subjected to any bend at that point that could lead to future kinking. Once

kinked, a hose or tube will be susceptible to future kinking at the same spot.

Hose, tubing and bundle products must always be cut with sharp tools, in order to leave a smooth cut surface. Never use a saw, since it will create contaminating particles that could enter the tubing.

Because we continually examine ways to improve our products, we reserve the right to alter specifications without notice.

# Accuflex Beverage Transfer Products

## Cautionary Statement

All Products sold and distributed by Accuflex Industrial Hose, Ltd. are in the nature of commodities and they are sold by published specifications and not for particular purposes, uses or applications. Purchaser shall first determine their suitability for the intended purposes, uses or applications and shall either conduct its own engineering studies or tests, or retain qualified engineers, consultants or testing laboratories and consult with them before determining the proper use, suitability or propriety of the merchandise or Products for the intended purposes, uses or applications.

Accuflex Industrial Hose, Ltd. ("Seller") does not recommend the Products for any particular purpose, use or application, and the Purchaser or user thereof shall assume full responsibility for the suitability, propriety, use and application of the Products. Purchaser shall follow all instructions contained in Seller's catalogs, brochures, technical bulletins and other documents regarding the Products. The Products, including but not limited to, hose, tubing or couplings, may fail due to the use or conveyance of substances at elevated or lowered temperatures or at excessive pressure, the conveyance of abrasive, injurious, flammable, explosive or damaging substances.

Hose or tubing used in bent configurations will be subjected to increased abrasion. Hose clamps or couplings may loosen after initial installation and all sections of hose and tubing including connections, couplings, clamps, conductivity and bonding should be inspected frequently, regularly and consistently, and should be replaced, adjusted or re-tightened for the avoidance of leakage, for the prevention of injuries or damages, and for general safety purposes. Except as indicated in its Limited Warranty, Seller shall not be liable or responsible for direct or indirect injuries or damages caused by or attributed to the failure or malfunction of any Products sold or distributed by it.

Purchasers or users of the Products should frequently and consistently undertake inspections and protective measures with respect to the use and application of Products, which should include the examination of tube and cover, conditions of the hose or tubing, and the identification, repair or replacement of sections showing cracking, blistering, separations, internal and external abrasions, leaking or slipped couplings or connections and make proper proof tests.

## Limited Warranty

The Products sold or distributed by Seller are warranted to its customers to be free from defects in material and workmanship at the time of shipment by us, subject to the following provisions.

ALL WARRANTY CLAIMS SHALL BE MADE WITHIN SIX (6) MONTHS AFTER SELLER SHIPPED THE PRODUCTS. SELLER'S LIABILITY HEREUNDER IS LIMITED AT SELLER'S EXCLUSIVE DISCRETION, TO 1) THE PURCHASE PRICE OF ANY PRODUCTS PROVING DEFECTIVE; 2) REPAIR OF ANY DEFECTIVE PRODUCT OR PART THEREOF; OR 3) REPLACEMENT OF ANY DEFECTIVE PRODUCT OR PART UPON ITS AUTHORIZED RETURN TO SELLER.

THIS WARRANTY IS IN LIEU OF AND EXCLUDES ALL OTHER WARRANTIES, EXPRESSED, IMPLIED, STATUTORY, OR OTHERWISE CREATED UNDER APPLICABLE LAW INCLUDING, BUT NOT LIMITED TO, THE WARRANTY OF MERCHANTABILITY AND THE WARRANTY OF FITNESS FOR A PARTICULAR PURPOSE. IN NO EVENT

SHALL SELLER OR THE MANUFACTURER OF THE PRODUCT BE LIABLE FOR SPECIAL, INCIDENTAL, OR CONSEQUENTIAL DAMAGES, INCLUDING LOSS OF PROFITS, WHETHER OR NOT CAUSED BY OR RESULTING FROM THE NEGLIGENCE OF SELLER AND/OR THE MANUFACTURER OF THE PRODUCT, UNLESS SPECIFICALLY PROVIDED HEREIN. IN ADDITION, THIS WARRANTY SHALL NOT APPLY TO ANY PRODUCTS OR PORTIONS THEREOF WHICH HAVE BEEN SUBJECTED TO ABUSE, MISUSE, IMPROPER INSTALLATION, MAINTENANCE, OR OPERATION, ELECTRICAL FAILURE OR ABNORMAL CONDITIONS, AND TO PRODUCTS WHICH HAVE BEEN TAMPERED WITH, ALTERED, MODIFIED, REPAIRED, REWORKED BY ANYONE NOT APPROVED BY SELLER, OR USED IN ANY MANNER INCONSISTENT WITH THE PROVISIONS OF THE "CAUTIONARY STATEMENT" ABOVE OR ANY INSTRUCTIONS OR SPECIFICATIONS PROVIDED WITH OR FOR THE PRODUCT.

10/2004



### **Accuflex Industrial Hose, Ltd.** **A Kuriyama Group Company**

36663 Van Born Road, Suite 300  
Romulus, MI 48174  
Phone: (734) 713-4100  
FAX: (734) 713-4190

Web Site: <https://www.accuflex.com>  
E-Mail: [sales@accuflex.com](mailto:sales@accuflex.com)

### **Kuri Tec Corporation** **A Kuriyama Group Company**

140 Roy Boulevard  
Brantford, ON, Canada N3R 7K2  
Phone: (519) 753-6717  
FAX: (519) 753-7737

Web Site: <https://www.kuritec.com>  
E-Mail: [sales@kuritec.com](mailto:sales@kuritec.com)

Bev-Seal® Bev-Steel® Bevlex®, Bev-Flex®, CLEARBRAID®, and Glas-Flex™ are registered trademarks of Kuriyama of America, Inc., Schaumburg, Illinois  
Bev-Seal Ultra® and Polyspring® are registered trademarks of Kuriyama of America, Inc., Schaumburg, Illinois.  
Klearon™ and Sani-Clean AM™ are trademarks of Kuriyama of America, Inc., Schaumburg, Illinois.